

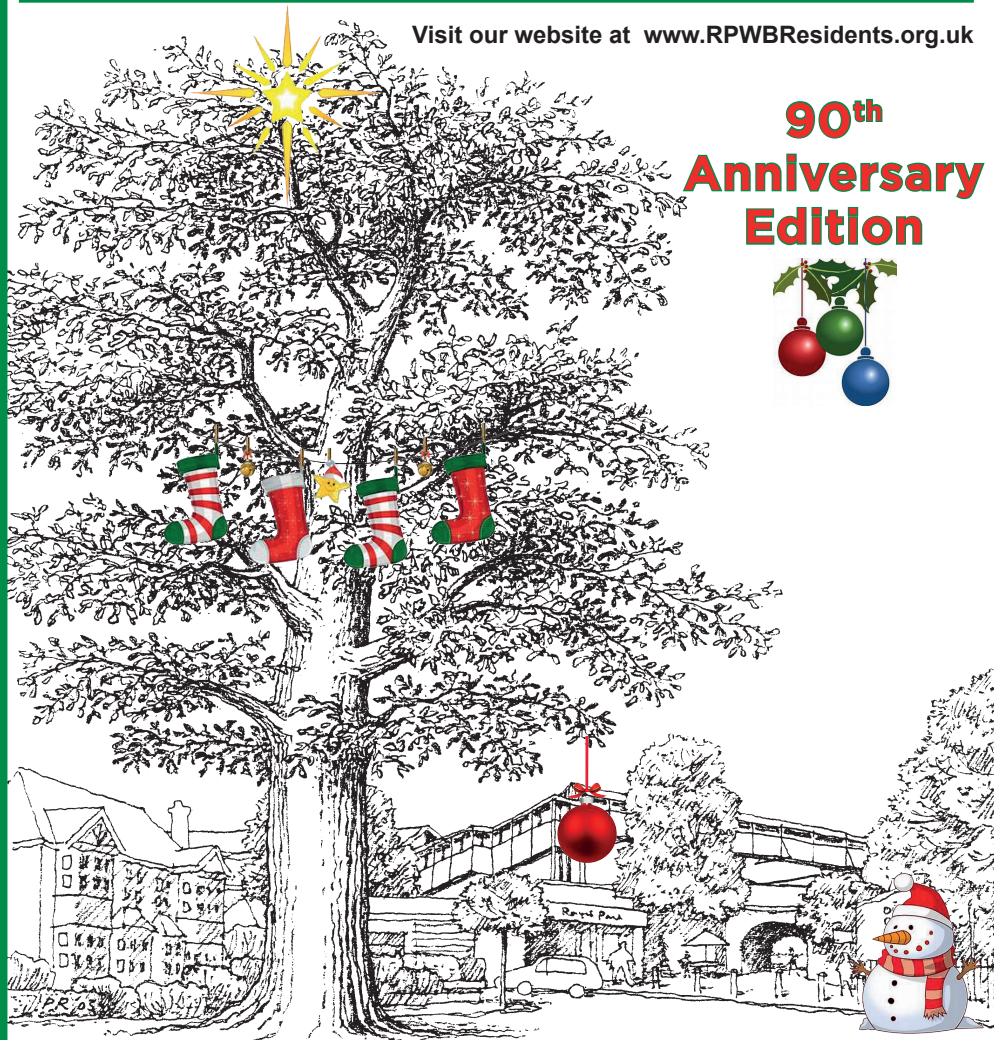
THE GUIDE

December 2018

SERVING THE COMMUNITY SINCE 1928

Visit our website at www.RPWBResidents.org.uk

**90th
Anniversary
Edition**



Raynes Park & West Barnes Residents' Association



@rpwbra

DISPLAY ADVERTISEMENT RATES

Eighth page	£20.00	Half page	£50.00
Sixth page	£22.50	Full page	£100.00
Quarter page	£30.00	Full page back cover	£125.00
Third page	£37.50		

5% discount for 6 month booking
10% discount for 12 month booking

Enquiries to Dick Coleman

020 8949 7593

advertising@rpwbresidents.org.uk

www.rpwbresidents.org.uk/advertising

Chiropodist / Podiatrist



Nadia Dhanani

BSC (Hons Podiatry) MCHS

Professional and friendly foot care
service

In the convenience of your own home

07581 36 36 08

HAVING A PARTY?

**Community Hall for hire
with facilities and parking**

Motspur Park

Brand New Kitchen Facilities

Call Sally on

07834 521573

or email

admin@holycrossmotspurpark.org.uk

R.P & W.B.R.A.

Affiliated Social Activities

Tennis Club Hon. Secs.: PHIL RYDER, (07958 360380). email: philip.ryder@blueyonder.co.uk

West Barnes Singers Hon. Sec.: PENELOPE PRENDERGAST, 35 Netley Gdns, SM4 6JW. (8648 3987)

Pisces Membership Co-ordinator: HARRY GREEN, 6 Thomas House, 20 Grange Road,
Sutton SM2 6RS. (020 8661 0205)

Raynes Park Bowling Club Hon. Sec.: J. GUINNARD, (07769 185297) email: jguinnard@hotmail.com

Merton Bowling Club Hon. Sec.: TINA SMITH, (07525 001496) email: tinasmith181@live.co.uk

Friends of Cannon Hill Common: CAROLYN HEATHCOTE, 166 Cherrywood Lane,
Morden, SM4 4HQ (8395 6416)

Friends of Sir Joseph Hood

Memorial Playing Field: CAROLINE VENTOM, 89 Marina Ave, New Malden, KT3 6NG.(8942 5605)

Pavilion Social Club Chairman: JILL TRUMAN, 8879 3525

Secretary: ANDREA HANNAN, 8540 0164, Email: andrea.hannan@sky.com

Motspur Park Horticultural Society: DIANNE WALKER, 27 Marina Ave, Motspur Park, KT3 6NE.
email: djohn2755@hotmail.com or motspurparkhorticulturalsoc@gmail.com

Paddock Horticultural Society: email: secretary@paddock-allotments.co.uk

Readers are reminded that the views in this magazine expressed by correspondents are not necessarily those of the Association.

Published by Raynes Park & West Barnes Residents' Association. Printed by Tremar Graphics.

CHAIRMAN'S COMMENT

Foreword

Welcome to this special edition of The Guide, which celebrates the Association's 90th anniversary. The first meeting of the Association was held on 8th March 1928 and we hope you enjoy some of the articles that have appeared over the years, as well as this month's contributions.

I would like to thank all our contributors, and, make special mention of our Editor Jill Truman who has worked so hard to gather it all together. Jill has been an active member of the Association for over 50 years and has held most of its offices. She was first appointed as Advertising Manager as long ago as 27 March 1968!

The Association was founded by residents concerned with flooding in the area, a major problem that has continued to cause difficulties many times since. At that time there was a large programme of inter-war building, with new family houses being built up Grand Drive and into the surrounding streets.

We have the Minute Books of the Association since November 1934, and they show that there were quarterly meetings, open to all members, that were well attended. Many of the issues discussed were those still being debated today, such as planning and road traffic, parking at Raynes Park station, grass verges, refuse collection, and postal facilities in Coombe Lane.

There was concern at the danger of the junction between Bushey Road and Grand Drive, which was originally a roundabout, and the Association successfully pressed for the introduction of traffic lights in 1940. There was a proposal in the late 30's by the railway authorities to rename Raynes Park station as West Wimbledon, and the Association fought and won a campaign to prevent this.

The Association put up its own non-party, independent candidates to the Merton and Morden Urban District Council, until it was merged into Merton Council.

But the Association also rapidly developed social activities of all kinds. There was an active horticultural society, which held an annual show with prizes. There was a children's party, for the young families that moved into the area. There were dinner dances for their parents. There were whist drives for the more elderly people. There was a photographic society. There were outings to Brighton and Southend, and visits to the ballet and the Palladium.

A tennis club was founded with 3 courts and was originally serviced by an "iron shed". This was replaced after WWII by a dedicated Pavilion.

Our membership has fluctuated over time, reaching a maximum of some 2,500 households, and there has always been a small subscription to join. This was 2/6p (or half a crown) in 1937. This helped to pay for the costs of The Guide, which has from the outset been the main channel of communication with the members.

The Guide was originally published every two months, and, astonishingly, was continued through the years of the second World War. It has been published every month since, a major achievement for a residents' association, and, so far as we know, unique.

The Guide has always been delivered through the help of Area Co-Ordinators and Road Stewards, very willing volunteers who give freely of their time to help their local neighbours. We thank them all.

The Chairman of the Association in 1937 reported that he hoped that the sometime remark "What do I get out of the Association?" would be less frequent - it should be "What do I put into it!".

The Guide is now available via post and e-mail, and we have developed a website that is much used by members and non-members. We are actively considering how best we can reach other, perhaps younger, people who use newer forms of social communication, such as Facebook, Instagram, and Twitter. We are conscious that the previous pattern of residents moving into this area and staying is now being increasingly replaced by a more mobile population.

We always try to look ahead. In recent years we have converted the tennis Pavilion into a new home for the Association, after the Tennis Club moved down Grand Drive to new premises.

The Association runs a well-attended and successful Social Club on Thursday afternoons. There are weekly lettings for a range of activities, including yoga, ladies keep fit, Pilates, and philately. It is much used at weekends for children's parties.

In ten years', time we will celebrate our Centenary. We all hope to be still around!

Dinner held in Celebration



50 members and their guests, including the Mayor of Merton, came to a dinner on 8th November to celebrate the 90th anniversary. It was held at the Taste Restaurant in Merton College, which is a training academy for catering and front of house students.

It was a great success and enjoyed by all present. The food was superb, and the service was impeccable, and reflected so well on the training the students had already received within a month of starting their courses.

The Restaurant is open to all members of the public, as the College is keen to test out the skills of its students in a realistic setting. It is open for lunch in term time three times a week, at a cost of £13.50 for a three-course meal including, on Fridays, a buffet, and for dinner on Tuesday nights at a cost of £22. This is enormous value for money. The number to phone is:

0208 408 6560, or e-mail:

TasteReservation@south-thames.ac.uk

John Elvidge



Some of the members enjoying the caberet fun



Tom Deveson doing his Chaucerian declension



John and Clare Townsend

Anniversary Dinner Thursday 8th November Menu



Starter

Roast pumpkin velouté, toasted pumpkin seeds and chilli (v)
Smoked haddock ravioli, soft poached egg, parsley sauce, pancetta crumb

Mains

Sautéed chicken, dauphinoise potatoes, spinach, sauce forestiere
Caramelised onion risotto, rocket, balsamic glaze, shallot rings (v)

Dessert

Bread and butter pudding, vanilla custard Shortbread Mille feuille,
seasonal fruit and vanilla cream, fruit coulis

Freshly brewed tea and coffee
Fixed Price Menu £22.00

DATES FOR YOUR DIARY

ASSOCIATION COMMITTEE AND OPEN MEETINGS

2018

December

Saturday 15th - **Volunteers' Party** 7.15pm Pavilion

RAYNES PARK FORUM

December Thursday 6th - 7.15pm Library Hall

2019

January

Tuesday 8th Committee 8.00pm Pavilion

February

No meeting

March

Tuesday 12th Committee 8.00pm Pavilion

April

Wednesday 3rd AGM (Open Meeting)

7.30pm Raynes Park Library Meeting Rooms

May

Tuesday 7th Committee 8.00pm Pavilion

June

Wednesday 12th OPEN MEETING

7.30pm Blossom House School

July

Saturday 6th SUMMER SOCIAL

3.00pm Pavilion

Tuesday 9th Committee 8.00pm Pavilion

August

No meeting

September

Tuesday 10th OPEN MEETING

7.30pm Pavilion

October

Tuesday 9th Committee 8.00pm Pavilion

November

Tuesday 12th Committee 8.00pm Pavilion

December

Saturday 14th Volunteers' Christmas Party

7.30pm Pavilion



14-26 Natural Health

361 West Barnes Lane, Motspur Park KT3 6JF

Lesley Reid

Reflexology/Hypnotherapy

07879 440 761

lesley@14-26.co.uk

Gillian Hibbert

Personal Counsellor

07494 225 796

cwtchcounselling@gmail.com

Dr Sharon O'Driscoll

Counselling Psychologist

07703 299 177

stodriscoll@btinternet.com

Sue Ip

Holistic Massage Therapist

07923 053 727

weikeitreatments@hotmail.com



The Residents' Pavilion at 129 Grand Drive

A space for private functions, meetings and classes

- Available to hire every day and at week-ends until 10pm
- Price per hour: £13 for RPWBRA members, £16 for non-members, Regular Hirers £12
- Bookings are for a minimum of 2 hours, with half hour booking units available thereafter

Further hire information and booking:
www.rpwbrsidents.org.uk/pavilion
E-mail: pavilionbookings@gmail.com
Tel: 07795 657036

*Managed by the
Raynes Park & West Barnes Residents' Association*

GUIDES BY POST SERVICE

If you live outside the Association's catchment area or have a friend or relative wishing to receive the Guide, postal subscriptions are available for £10 per year.

Please send a £10 cheque payable to RP&WBRA together with name and address to:

**George Holder, 131 Grand
Drive, SW20 9LY.**

Raynes Park & West Barnes Residents' Association

founded in 1928

AIMS

The Association is a non-party political, non-sectarian group that endeavours to protect the local environment on behalf of its Members by:

- **Keeping a watching brief on large-scale planning applications, making objections where these are seen to be necessary, and keeping Members informed of the action they should take.**
- **Taking up Highways issues with Merton Council and by bringing to Officers and Councillors the concerns of residents.**
- **Endeavouring to ensure that there is proper consultation on local issues and that the majority view holds.**
- **Taking a keen interest in all matters of concern to Members, including educational issues, health issues, transport issues and environmental issues.**
- **Encouraging and advising Members on which authority to approach so as to sort out a complaint.**

We also represent our Members on

other bodies and forums.

However, the Association DOES NOT get involved with neighbour disputes.

In addition to the above, we publish monthly The Guide - which is delivered FREE to Members - keeping them up to date with local issues raised and providing a host of other information. All for just £3.00 per year.

IS YOUR FAMILY HOUSEHOLD ONE OF OUR OVER 2,000 MEMBERS?

IF NOT, WHY NOT JOIN TODAY



About our Team...

John Elvidge
Hon. Chairman:



John was born in the Nelson Hospital and has lived in Raynes Park all his life, being a founder member of Hatfield Primary School. He read Law at Cambridge, and then practised as a Barrister before sitting as a Judge for over 20 years trying criminal, civil, family, and immigration cases.

John also served as a Merton Councillor for 16 years, finally becoming Leader of the Council, with Theresa May as his Deputy!

Notwithstanding the above, John enjoys playing golf and tennis, and has completed 10 long-distance footpaths. He has also managed to indulge his love of travel and has now been to all seven continents.



Fuller Gilbert

& Company

Estate Agents - Valuers - Development Consultants

Whether you're thinking of moving now or in the future, or just want a free no obligation market appraisal, please call in to meet us or phone us today.

Grant Fuller
Fuller Gilbert & Co.
 316a Worple Road
 West Wimbledon
 London SW20 8QU

020 8947 4764
www.fullergilbert.co.uk

John Townsend **Hon. Treasurer:**



After graduating from Goldsmiths' College where he trained as a maths and P.E. secondary school teacher John enjoyed a varied career working initially as a statistics officer at Shell.

After a chance meeting - in a pub - he was persuaded by the late Claude Bonnichon to move to the primary school sector where he had a great career as a teacher, maths adviser and, latterly, school finance officer.

Throughout his working life John pursued a parallel career as a folk singer/guitarist, travelling throughout the country to play at various gigs and enjoying work both as a singer and a compère at festivals.

John has been the Treasurer for the RPWBRA since 2011 and he is also much appreciated at the Paddock Allotments for his tasty cooked breakfasts.



Clare Townsend **Hon. Secretary:**



Clare graduated from Maria Assumpta in Kensington and pursued further studies at the London Institute of Education in Bloomsbury.

During a rewarding career as a teacher Clare became a schools' adviser in Greenwich and Lewisham before her appointment to headship in Wandsworth.

As headteachers' representative on the Wandsworth Safeguarding Board she was an integral part of the multi-disciplinary team delivering training alongside police, medical representatives and social workers to staff in schools, colleges, council departments and voluntary organisations. Her MA dissertation for Surrey University was entitled "Child Protection and the Primary School".

Clare, who was also a singer with a blue-grass band, is most likely these days to be found presenting stories and songs to children in schools, nurseries and the excellent Raynes Park Library!

Clare joined the Association as Minutes

Secretary in 2016, and together with John Townsend, has also given a tremendous boost to the Association's social activities.



Dick Coleman

Hon. Advertisement Manager:



Born in Wimbledon, Dick was raised in Streatham until aged 18. His family moved to West Sussex, but soon he was back in London, at college. Having been given advice that he was best suited to a career in a small business, Dick joined one of the UK's largest employers, BT, based in central London where he held a variety of roles, latterly in sales & account management, working closely with major oil companies, then internal IT management.

Now retired, Dick has lived with his wife Liz in Motspur Park for over 30 years, and has been involved with the Residents' Association, for 12 years or so, in Guide distribution & membership, and more recently as Advertising Manager. His other interests include most sports - as a spectator - and researching family history.

Andrew Barwick

Hon. Distribution Manager:



Andrew has been responsible for "The Guide" distribution and Association Membership matters for just over 10 years and says that working with 50 to 60 RP&WBRA volunteers has been one of his more interesting management challenges.

Before retiring from business, Andrew was Managing Director of Thermofrost Cryo PLC, a successful distribution, wholesaling and manufacturing company operating in the Refrigeration and Air-conditioning industry.

Born on the IOW, he moved to Surrey as a child, studied engineering & thermodynamics whilst a student apprentice at the Royal Aircraft Establishment, Farnborough.

He is a passionate sailor, having crossed the Baltic, North Sea and the Atlantic Ocean under sail. He enjoys his classic sports car and working on his old motorboat and his classic motorcycles.



Jill Truman
Hon. Editor of the Guide:



Jill was born and brought up in East Sheen and attended Putney High School, and St. James's Secretarial College, also training in drama, before working in pharmaceuticals and public relations. One claim to fame was starting the local Guardian newspaper with Paul Morgan, before it was eventually sold on to Newsquest.

Jill has worked for the Association in one capacity or another since 1968, and was a Merton Councillor from 1982 to 1994, having had the privilege of Chairing many different committees of the day including Highways, Housing & Social Services and Planning. She currently edits the Guide and helps Andrea Hannan to run the Pavilion Social Club for the Association.



Committee Members
and Advisors

Jerry Cuthbert
(Chair of the PMG)



Jerry is a chartered civil engineer and, after a career in the construction industry, he is now fully retired. Jerry was involved with a variety of major projects, including the building, commercial property, defence, energy, infrastructure and transport industries.

I've lived in Raynes Park for over forty years and have been a volunteer in our community for most of that time. I have been a RPWBRA committee member since 2007, have chaired the Premises Management Group since 2013 and also represent our Association in the umbrella grouping of business and residents' associations centred on Raynes Park. I also enjoy my other interests, such as gardening, walking, oil painting and travel.



David Freeman



Born in Sydenham S.E. London, David's early years were disrupted by his family having to make multiple moves during the War. However in the 50's they settled in Clapham Park. Having completed School and College, David served in the RAF before joining the Civil Service working, in turn, in the Ministry of Defence, Overseas Development and the Foreign and Commonwealth Office. This lengthy spell in Whitehall enabled him to travel widely - particularly in Sub-Saharan Africa where he served two 'tours of duty' in East Africa and the West Indies.

In the late 60's David moved with his family to Raynes Park when he joined the Residents' Association. Much his time on the Association Committee, apart from a short spell as Chairman, has been dealing with Planning Applications, in the main, trying to protect playing fields and Open Space.

David's Interests and have included a lot of cross country running, cycling, archery, kayaking, sailing and hill walking intermixed with amateur dramatics. These days, he is often to be found entertaining members of the Pavilion Club with his dramatic abilities and hilarious monologues. David's picture was taken in his thespian days.

Michael Marks



Up to the age of 13, Michael was raised in Edgware, NW London. He then went to boarding school in Bristol. At 18. He returned to London and started his career in the Jewellery trade. After 40 years rushing around in the hustle and bustle of London, he is now working for himself from home at a more sedate pace in the world of property investment. His newly found free time is given to a little travelling, nice food, plenty of rum and local matters through the Raynes Park & West Barnes Residents' Association.

Andrea Hannan Hon. Secretary Pavilion Club



Andrea was raised in Cheshire until the age of 18, when she came down to Guildford to study Hotel Management at Surrey University. Andrea then joined Trusthouse Forte (THF) as a Management Trainee in London hotels. During the next 17 years she was responsible for 65 hotels.

In 1983, Andrea married Paul, the General Manager of a large London Hotel and they set up home together in Raynes Park where their daughter Josephine was born. Later, Andrea went to Kingston University to graduate on the CIPD Programme and afterwards to Greenwich University to qualify in teaching.

For the next 17 years, Andrea taught and managed professional programmes until she retired. In 2014 Andrea was asked to consider running a social club for people over retirement age, and together with Jill Truman took on this task. Nearly five years on, the Pavilion Club is a thriving autonomous arm of the Residents' Association, which Andrea still enjoys organizing.

Also, with special thanks to:

Members of the Premises Management Group

Chair: Jerry Cuthbert
John Townsend
David Freeman
Linda Fitch
Moirra Deveson
Howard Philips
Tina & Chris Lorimer

and to

David Rush who keeps a weather eye on Meadowsweet Ditch



Raynes Park Residents' Association

PAVILION SOCIAL CLUB

The Pavilion Social Club is a social and activity club for residents in the area. The club was established in March 2014 and has been very successful, growing steadily in numbers. We hold weekly get-togethers for men and women. Our club offers an exciting programme of activities including occasional guest speakers, theatre trips, lunches and visits to places of interest in both London and the South East but our main focus is on developing and encouraging social links and also on enjoying friendships new and old. You will always receive a warm welcome!

INTERESTED?

Do join us on Thursday afternoons at
**THE PAVILION, 129 GRAND DRIVE,
RAYNES PARK**

(The old Raynes Park Residents'
Tennis Club)

from 2.00 to 4.00 p.m.

There is an annual membership fee of
£5 and a weekly subscription of £2
to cover costs.

EVERYONE WELCOME!

Light refreshments are available with
thanks to Waitrose - Raynes Park,
and local residents for their generous
donations through the Community
Matters scheme

*For more information
please do not hesitate to contact
**Jill Truman on 020 8879 3525
or Andrea Hannan on 020 8540 0164***

COLD CALLERS AND ROGUE TRADERS

Useful information from Merton and Richmond's Trading Standards Department

Over recent months Trading Standards and the Police have dealt with several instances in Raynes Park and West Barnes of residents falling victim to being cold called by rogue traders. One householder lost over £49,000 whilst attempts were made to defraud other residents of £45000 and £26000.

Such stories have been highlighted on TV and in the Press many times and you may well think it will never happen to you, but it is so easy to get caught out before realising just what has happened.

Typically, the rogue appears at the front door saying he is working locally and has noticed a roof tile or similar needs attention. If the resident shows any interest the job suddenly gets bigger. Mostly unnecessary work will be priced far above the market rate. Money is requested up front, usually in cash. The job will be left incomplete and work undertaken is of poor quality. If the householder makes a claim they find names and addresses not traceable.

Thus, Merton and Richmond Trading Standards wish to highlight the following:

- Don't buy at the door. This is the most important and effective way to avoid falling victim to traders calling at your door. Trading Standards recommend residents always say no to cold callers
- Door Stickers stating "We don't buy at the door from uninvited sales people" are available free of charge from Trading Standards. If

you receive a visit you can simply point to the sticker and close the door.

- Finding a reputable trader. Personal recommendations can be useful, so too can some trader approval schemes. The better schemes undertake detailed checks on the traders and provide useful customer feedback along with a route to complain. Schemes we recommend are: "Buy with Confidence" (<https://www.buywithconfidence.gov.uk/>), "Which? Trusted Traders" (<http://trustedtraders.which.co.uk/>) and "Checkatrade" (<http://www.checkatrade.com/>).

When older residents have smaller jobs, we also recommend asking **Wimbledon or Merton Guild of Social Services** for their advice about people they can recommend who will take on small tasks such as household repairs, decorating, putting up curtains and much more. Further information can be found at <https://www.wimbledonguild.co.uk/> <http://www.mandmguild.wixsite.com/mandmguild>

- **Cancellation rights.** A written notice giving you 14 days to cancel should be provided if you agree a contract when a trader is in your home (with a few exceptions). It is an offence not to provide this.
- **Contract information.** The trader must also supply other information in writing before the householder agrees the contract. This includes a description of the work to be carried out, the total price to pay inclusive of VAT, the name and address of the business and any phone numbers.

Starting work without permission is a popular tactic employed by doorstep traders and an offence. The rogue may use vague language, so the consumer feels that maybe

they inadvertently agreed; even though they didn't. They may also start removing roof tiles and even walls, so the house is no longer secure or watertight, giving the householder little option but to proceed with the work. The Trader refuses to leave when asked. If you ask a trader to leave your home and they refuse, then this is also an offence.

Claims made by the trader. Doorstep traders often make false claims such as being a member of trade associations. They may also make statements that could have some element of truth but are nevertheless prohibited. For example, a salesman cannot imply they will lose their job if they cannot close the sale.

Bogus official. Many victims of doorstep crime are targeted a second time by the rogue traders or their associates, this time claiming they are Trading Standards Officers, Police or other officials. These bogus officials say they can recover money paid to the original rogue trader, often claiming this is part of a court process. The bogus official always requires some form of payment to be made by the victim before any compensation can be paid. Unfortunately, several homeowners in Merton have lost large amounts of money to this scam.

Look out for neighbours. The way that we find out about many of these incidents is by concerned neighbours letting us know. Victims may not be capable of contacting us or not even realise they are being defrauded. If you are concerned about unusual building work, particularly at the home of a neighbour who may be vulnerable, then let us know. We are happy to visit and check if the trader is genuine and if the householder needs assistance.

Trading Standards can be contacted on tel. 020 8545 4018 or email trading.standards@merton.gov.uk

LOCAL COUNCILLORS

RAYNES PARK WARD

Adam Bush

c/o Merton Civic Centre
020 8545 3396 (Civic Centre)
adam.bush@merton.gov.uk

Omar Bush

c/o Merton Civic Centre
020 8545 3396 (Civic Centre)
omar.bush@merton.gov.uk

Stephen Crowe

1 Southdown Drive, Raynes Park, SW20 8EZ
Mobile: 07931 650424
stephen.crowe@merton.gov.uk

WEST BARNES WARD

Eloise Bailey

c/o Merton Civic Centre
eloise.bailey@merton.gov.uk

Hina Bokhari

c/o Merton Civic Centre
hina.bokhari@merton.gov.uk

Carl Quilliam

c/o Merton Civic Centre
carl.quilliam@merton.gov.uk

Liberal Councillors may be contacted through their Civic Centre Office on 020 8545 4770

CANNON HILL WARD

Pauline Cowper

c/o Merton Civic Centre
Mobile: 07811 595559
pauline.cowper@merton.gov.uk

Mark Kenny

15 Meadway, Raynes Park, SW20 9HY
020 8542 4768
mark.kenny@merton.gov.uk

Nick McLean

30 Monkleigh Road, Morden SM4 4EW
020 8542 4768
nick.mclean@merton.gov.uk

LETTERS



(Letters to the Editor should be sent to: Jilltruman2@gmail.com)

To: The Editor
From: John Nicholson
Date: 4th November 2018

I enclose copies of correspondence I have had with Merton Borough Council which I would be happy for you to publish in the Guide.

Date: 22nd September 2018

To: The Director of Environment and Regeneration, London Borough of Merton.

Dear Sir,

Freedom of Information Request

Pursuant to the provisions of the Freedom of Information Act 2000 I should be obliged if you would advise [me of] the local cost to Merton's Council Taxpayers of the decision taken to hold a second statutory consultation exercise on proposed waiting restrictions in Barnard Gardens, Belmont Avenue and Errol Gardens.

I await your reply with interest.
Yours faithfully

Date: 8th October 2018

From: James McGinlay
Head of Sustainable Communities,
Environment & Regeneration Department
London Borough of Merton

Freedom of Information Act 2000/ Environmental Information Regulations 2004, Freedom of Information Request F11404

We have now considered your information request as set out below.

Our response:

The cost of the second statutory consultation is £1500. This is covered by the income generated from controlled parking zones and not the Council Tax.

If you are dissatisfied with the handling of your request, please contact the Head of Information Governance at Merton Council, Civic Centre, Morden SM4 5DX

Since when was Merton Council a subsidiary of the Nuffield Estate?!



To: The Editor
From: Terry Dunn
terenceridleydunn@yahoo.co.uk
Date: 5TH November 2018

Re: St. David's School, Blenheim Road

I wonder if you can help me, please.
I went to a small independent school, St. David's in Blenheim Road, from 1957 - 58, when I was four.
I seem to recall that it was run by two sisters, possibly called Mustoe, possibly residing in Cavendish Avenue. I am sorry to be so vague!

For reasons of pure nostalgia, I am keen

to ascertain any information, such as the reminiscences of former pupils or their parents, or indeed anyone who has any recollections, with hopefully some photos.

I only seem to remember two things: a large roller in one corner of the small playground, and my mother on her bicycle outside the school, with me in the seat behind the saddle, and our cat, Whiskey, a stray that we rehomed from the school grounds, in the basket in front of the handlebars!

My earliest memory - please excuse my indulgence, which touches me to this day!

A Google search and Merton Archives reveal absolutely nothing!

As your association dates from 1928, your publications may have included some material.

I would welcome your response.

[Mr. Dunn informs me that:

He lived in Claremont Avenue from 1953 – 1971, was a scout with the 22nd Wimbledon group in the 60's.

He was a choirboy at Holy Cross before that, and later went to Crusaders' Boys Club.

He recalls a social aspect to Holy Cross – and remembers playing cricket at Motspur Park on a Friday!

He now lives in Walmer, an historic seaside village on the Kent coast.

Julius Caesar is believed to have landed here in 55BC; and 100 yards from his home is a Norman church dated 1120, built on the foundations of an Anglo-Saxon one.

Apparently, The Duke of Wellington worshipped there in the 1830s and 40s, when

he lived in Walmer Castle.

Outside the church is a yew tree, estimated to be 1,400 years old and nearby, the elaborate grave of an Iron Age Chieftain was found - the contents are now in the British Museum.

Mr. Dunn says that "dear old Motspur Park, for all its fond memories, cannot compete with that history!"

I must agree with that, but it all sounds lovely
Editor]



To: Raynes Park & West Barnes Residents

From: Kris Witherington, Community
Engagement Manager LBM
[www.twitter.com/kriswither](https://twitter.com/kriswither)

Date: 6th November 2018

Notes from the **Raynes Park Community Forum meeting on 18 September 2018** are available from our website at:
<https://democracy.merton.gov.uk/ieListDocuments.aspx?CId=140&MId=3163&Ver=4>.

You can either read them on the site or download a PDF. You can also register for alerts so that you are automatically informed when new papers are added to the website by going to:
<https://democracy.merton.gov.uk/mgRegisterKeywordInterest.aspx>

You may also be interested in other consultations currently taking place. There are two Planning Policy Consultations currently underway, the Local Plan and the Future Wimbledon Masterplan. We are creating a new Local Plan to provide a sound basis for planning decisions. The plan will help guide how the borough develops over time and create a vision that enables the council to successfully and responsibly manage growth, while ensuring the best interests of the borough, its residents and businesses. For further information and to respond by 6 January 2019 please see <https://www.merton.gov.uk/planning-and-buildings/planning/local-plan/newlocalplan>

The Wimbledon Masterplan covers the town centre in Wimbledon and will create a long-term vision for the future development of the area. For more information and to respond by the deadline on 6 January please go <https://www.merton.gov.uk/planning-and-buildings/regeneration-projects/future-wimbledon>.

Transport for London are consulting on proposals for a new, direct and quicker transport link between Sutton and Merton, called the Sutton Link. The Sutton Link would create a high-capacity route for people travelling between Sutton town centre and Merton using zero-emission vehicles. It would connect with other major transport services into central London and across south London, including National Rail, London Underground, existing tram and bus services. They would like to know your views about three potential routes. They are considering a tram or 'bus rapid transit' (BRT) for the Sutton Link and

would also like to know your views on this. To find out more and respond please see <https://consultations.tfl.gov.uk/trams/sutton-link/?cid=sutton-link>



To: RP&WBRA Residents
From: Dan Edwards, Community Manager at SGN
Date: 16th November 2018

Re: Major gas works Grand Drive, Raynes Park

COMPLETION:

Following my communication last week about our upgrade to our network in Grand Drive, Raynes Park, I would like to share some further excellent news with you.

Our engineers have completed our gas network upgrade project in Grand Drive, four weeks ahead of schedule

Following a site review in partnership with London Borough of Merton, we have been able to reopen Grand Drive to all motorists this morning.

Once again, thank you so much for your patience and understanding while we have carried out our work. The new plastic pipe has a minimum lifespan of 80 years. This means that Raynes Park businesses and residents will continue to enjoy the benefits of a safe and reliable gas supply for years to come.



BUILDING A SUBURB

Part 1.

by John Tarling

All around London are building projects that never came to their full flower: Crescents that did not grow beyond quadrants, Parades that stopped at three shops and a flank wall with toothing bricks, First Avenues that never begat a Second or a Third.

Anyone coming through the tunnel under Raynes Park Station on Armistice Day 1918 and looking up The Grand Drive as it was originally called, might have thought this was another example of frustrated optimism. Between the backs of the houses built ten years earlier in Gore Road and the beginning of Grand Drive, much of the approach to Prince George's Playing Field had been converted into allotments during the war. On the left, on the eastern, side of Grand Drive stood about twenty Arts and Crafts villas with St Saviour's Church opened in 1907 standing in some isolation opposite. Beyond them were the bigger houses on the ridge where Blenheim Road is, and beyond those Grand Drive dwindled to a path to Bijou Villas and then across farmland with Battersea Cemetery and St Anthony's Hospital as features in the distance.

The Golf Club

George Blay, the man most responsible for changing this rural landscape to the suburb of today, was born in Devon in 1880 but by the outbreak of World War one had a business in New Maiden making and selling timber buildings. In September 1924 he bought the Raynes Park Golf Club that had been on the western side of Grand Drive plus the Cannon Hill Estate. He acquired smaller adjacent areas very soon afterwards and even after selling Cannon Hill Park, which was renamed as Cannon Hill Common, had an estate of 250 acres which he planned to develop with houses and sports grounds.

Homes for Heroes

By 1924 there was a great pent-up demand for houses. The building industry had been in a trough before 1914 and most building stopped after 1915. Lloyd George had announced a plan immediately after Armistice Day that became known as "Homes for Heroes" mostly carried out by Councils with Government subsidy; but in 1922 the programme was terminated abruptly because of soaring costs. After ten years' quiescence private enterprise tentatively began to build again. Local stimulation for Blay's decision might have been the activity of Sidney Parkes who had been building in New Malden and was now erecting houses in Adela Avenue in Motspur Park and, on a much larger scale, the purchase of the John Innes estate in Merton Park by the Housing and Land Development Corporation Ltd, one of whose directors was Sir Edwin Evans the Battersea estate agent and a conspicuous figure in estate development before the War.

What set Blay apart was the size of his scheme and his anticipation of the interwar suburban housing boom. While estate developers like Edwin Evans acquired and planned the layout of the estate, arranged for sewerage and then sold parcels to various builders, Blay formed a company, Cannon Hill Estates Ltd, and did all the preliminary works, building and selling through that company. His co-director Harold Turner was an architect who had worked on local government schemes. Blay was ahead of many other builders in the London area. Wates at Streatham Vale, Costain at Neasden and Suburban Developments Ltd. who took over the huge unfinished City of London housing estate at Gants Hill north of Ilford; all entered into major commitments in 1924 and 1925 but Blay's contract preceded these.

Firstway, Bushey Road and the Sports Grounds

The trade magazine "Master Builder" reviewed the Cannon Hill estate in October 1927. By then Firstway had been entirely built up, houses erected on the south side of Bushey Road west of Grand Drive and some in

Fairway. Blay tried to preserve the surroundings of the original bigger houses by imposing covenants and any houses fronting Grand Drive and Blenheim Road had to be set back at least thirty feet and to be of a higher minimum cost (£850). The estate plan is reproduced in the magazine and shows only houses and sports grounds. The existing and proposed open spaces were a big selling point. Blay also imposed a covenant across the whole estate that no ornamental trees were to be cut down. No space was reserved for schools, churches or other public buildings except for shops. These were built on the end of Approach Road, but the other shops intended for the west side of Grand Drive between the station and Bushey Road never materialised. For some years that land was used as a miniature golf course.

The market for sports grounds in the area seems to have reached saturation point earlier than the housing market. Some of the proposed sports grounds were built over e.g. by Crossway, Meadway, Oakway and Woodlands. Crossway appears to be the result of pressure from the Council on town planning grounds to ensure that the

roads on the estate linked up with West Barnes Lane. Anyone stuck at the traffic lights in Crossway now could spend the time reflecting on the delays that would occur if the only roads at that point were Greenway and Westway as originally intended. In the 1920s people were expected to walk and cycle. There was no bus service along Grand Drive till 1934. By October 1927 only 20% of the houses had garage space and for those tenants who were not provided for there was the battery of forty garages off Firstway available for rent.

The Council also wanted Blay to widen Grand Drive to 45 feet, but he asked what the point of that would be when the road led to the tiny tunnel under the station. The Council said that any improvement to the tunnel would have to wait until the station was rebuilt.

Blay planned to build about 150 to 200 each year. One advantage of his large scale of operation was his ability to introduce buyers to Building Societies who would offer 85% mortgages which was a higher percentage than many lenders would offer at that time



Style

The house styles were conventional for the 1920s with plain leaded lights and three vertical timbers in the gables over the bays. The more dramatic designs of the 1930s were to appear in other suburbs in a more crowded market. The only houses on the estate that differ from the general pattern are the two white rendered green roofed houses at the junction of Southway and Parkway. This junction was not part of the original plan. Southway, which would have been called Paddocksland, was supposed to form a T junction with Elm Walk. The link between Elm Walk and Parkway would have been on the line of Meadow Close where the footpath now runs. Meadow Close itself would have been the entrance to a sports ground but as the land was used for houses Meadow Close was extended to Elm Walk and so became what is possibly the only Close in London not to be a cul-de-sac. While the road layout on the west side of Grand Drive was affected by traffic proposals, on the other side of the road Blay had to work around some houses that had already been built in Heath Drive and the beginning of Elm Walk by Bessant Brown Ltd, a company that was formed about a year before Cannon Hill Estates Ltd

The Bessant Brown houses can be recognised by the corbelled brick oriels under the third bedroom window, whereas Blay houses support that bay either by a projecting strut that lies flush with the underside, or especially on bays on the side elevation, by a cabriole strut. The Bessant Brown houses are also at the beginning of Parkway which, according to one source, would have been called South Drive, though according to the estate plan that name would have been given to the farther half of Elm Walk.

Court Case

In 1931 Cannon Hill Estates Ltd. had the misfortune to be the losing party in a leading case. Late 1929 had been exceptionally wet and windy and one new house owner found that the exposed wall was penetrated by damp. There is correspondence preserved in the National Archives in Kew between

Blay and his solicitors and the Building Research Station about damp-proofing walls. The Station said that there had been numerous complaints and enquiries about damp around that time. At the Court hearing the expert witness from the Building Research Station who had been subpoenaed said that his house leaked. The Station recommended 11-inch cavity walls as the only reliable form of damp proofing. The irony is that the Building Bylaws of Merton and Morden UDC at the time prohibited anything but solid walls.

There was some publicity about the case but the houses on the estate continued to be sold as soon as they were built. To compensate, Blay was a pioneer of a benefit to buyers. Sewerage and road-laying are the main precursors of building a housing estate. The sewer in Grand Drive was in such a poor condition that it had to be replaced before the work on the main part of the estate was begun. Originally the roads were to be sleeper roads that would be made up to the proper standard after the houses were completed. The cost of that would fall on the house buyer a few years after he (usually he in those days) moved in. About 150 tons of materials are moved in the construction of the average house including 15,000 - 20,000 bricks. Working on such a large scale Blay found that sleeper roads were totally inadequate, and he adopted the system already begun in the area by Bilton on their estate off Burleigh Road, Stonecot Hill, of laying concrete roads before the houses were built. This reduced the problem shown by one writer to the Wimbledon Borough News who complained that she had been marooned in her house for a week because she could not manoeuvre her pram through the mud on Grand Drive. It also meant that the Council could take over the roads once construction work was finished and by 1928 a buyer could sign an agreement that the house would be sold free of road charges.

Completion

The Cannon Hill Estate was mostly complete by 1934. By then the market for three bedroom houses in the suburbs was almost fully catered for and many builders were turning to flats and maisonettes. Blay built a small block, Bushey Mansions, at the corner of Grand Drive and Bushey Road and then a much bigger block, Merton Mansions, of 132 flats with a swimming pool at the corner of Bushey Road and Martin Way. This must be one of the last blocks built in London to bear the name "Mansions".

Blay had bought a few shops in the area and the Blay style was also exported to the upper slopes of New Malden at Buxton Drive and Cromford Way, off Clarence Avenue, which is the only venture of Cannon Hill Estates outside Raynes Park that I know of.

George Blay died in 1936 at the age of 56. The land on the west of Grand Drive that had been intended for shops was sold to New Ideal Homesteads who promptly built a range of their typical designs. They

also built some terraces on Bushey Road east of Merton Mansions. Other builders developed the remaining sites on the far side of Cannon Hill Lane. His legacy is that after eighty years when the names of many suburban developers have been forgotten his houses are still known and described by his name.

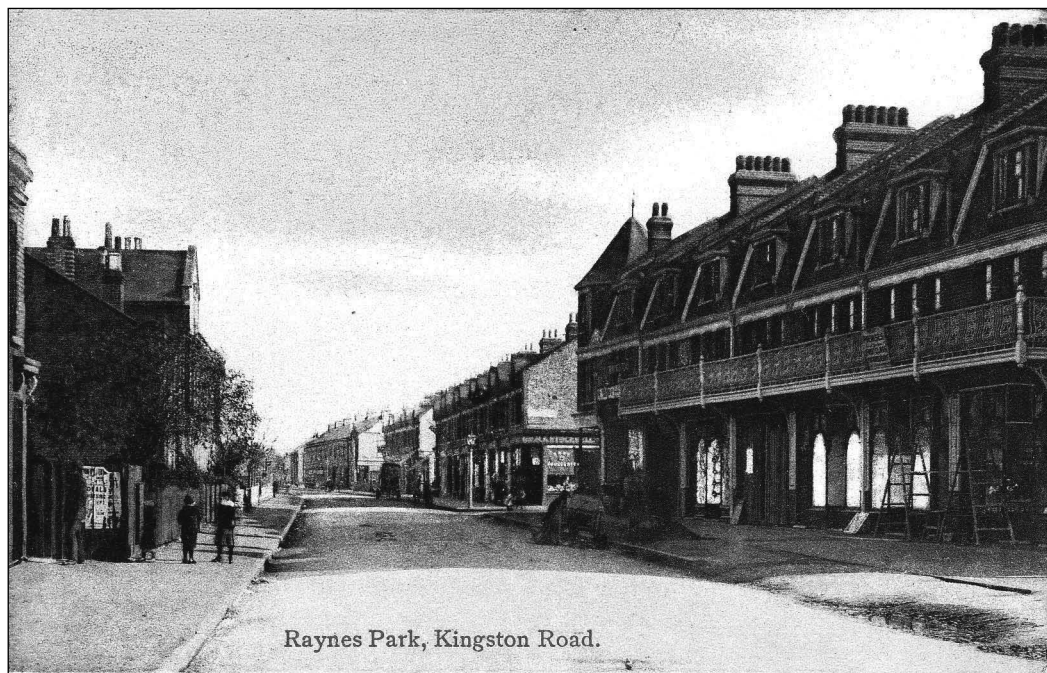
JRT®



REBUILDING A SUBURB

by John Tarling

The main Blitz on London began on 7th September 1940, but Merton and Morden suffered an earlier raid on 16th August. In the late afternoon German planes attacked New Malden, killing a lot of people at the station. In fact, more than one-third of the deaths by enemy action in New Malden throughout the War occurred in this raid. The planes then



Raynes Park, Kingston Road.

continued up the line of the Kingston Road killing a further 24 people in Merton before the attack ended. In those early days the Luftwaffe used many small bombs which caused casualties over a wide area but not much severe structural damage.

85 more people were killed in Merton and Morden during the main Blitz. A total of 30,000 people was killed at that time but mostly in Inner London and the eastern half of the city.

Much of the damage to Merton and Morden was caused during June, July and August 1944 when the flying bombs were launched from France. Most landed in an arc roughly along the line of the South Circular Road or the boundary between Fare Zones 2 and 3 but the VI was a very effective psychological weapon as everyone under the flight path had to listen to the motor. When it stopped people had about twelve seconds to get under cover. Consequently, people living in Morden, Sutton, Epsom, Croydon and points east were under constant strain for 80 days as the Vis came continually, day and night, and though most passed over, 35 did not and fell on Merton and Morden. Eight of these fell in the Association's area.

The amount of open space in the area was an advantage as almost one half the bombs did not cause death or serious injury. The first to arrive, three days into the attack, fell on the King's College School playing field, roughly on the principal cricket square. The pavilion survived, although it burned down just over twenty years later. The second fell near the junction of Belmont Avenue and Burlington Road and the third near the railway bridge over West Barnes Lane.

The next five had dreadful consequences. On the night of 22nd/23rd July, one fell in Elm Walk and the next night one fell at the Bushey Road end of Chestnut Road. That area was hit again on 14th August when many houses were destroyed in

Vernon Avenue and Carlton Park Avenue. In these three cases it is obvious where the bombs landed. There were two other incidents where people died, one hit Cavendish Avenue and, right at the very end of the VI campaign, another at the northern end of Adela Avenue and Phyllis Avenue. That was the last bomb to hit the area. The V2 attacks began nine days later but as these were fired at maximum range from Holland nearly all landed in the eastern half of London and none in Merton and Morden or Wimbledon, Mitcham, Sutton and Cheam, Maiden and Coombe or Epsom and Ewell.

Apart from the psychological strain on the people, the need to repair the damage was a major problem for the Government. Each VI landing in a densely built up area like Vernon Avenue would demolish on average six houses outright with another six so badly damaged that they would have to be demolished subsequently. The next category damage was sub-divided into two classes: what could be repaired during the war and what would have to wait till afterwards. Damage was less but meant that a house was not wind or watertight. Breakage of less than 10% of the windows in a dwelling was not even recorded. Each VI could damage up to 400 houses. In East London a V2 with the same one-ton warhead - but the added kinetic shock of seven tons of metal hitting the ground at twice the speed of sound - could damage over 1000 houses.

By September, even with factories working flat out the reserve stocks of glass, plasterboard and roofing tiles had been exhausted in south east England, and the winter of 1944/45 was to be one of the hardest of the century.

The Government allocated each district to a large builder with the necessary administrative staff to co-ordinate repair in the right priority. Gleasons were responsible for Merton and Morden. Their offices were just beyond the District boundary and

though they had not built any houses in the District (though many off Gander Green Lane) they had built the barracks on Stonecot Hill and Morden Farm School just before the outbreak of war.

Somehow people coped. Over 100,000 prefabs were ordered (which Local Authorities could ask for). Merton and Morden did not ask for any, though Wimbledon and Mitcham did, and West Ham requested 2,000.

Wandsworth put prefabs on over 100 bombed sites. They could be connected to the existing infrastructure comparatively easily. Some were put up before the war ended and a few paid for the price for this anticipation such as the ones in Nutwell Street, Tooting (behind the Gala Bingo ex-Granada in Mitcham Road) which were wrecked by one of the few V2s to land in south west London.

Merton and Morden had the benefit of unfinished housing estates and builders like Wates and Crouch who were still in business. I can intrude my personal testimony here. I came to Morden at the beginning of 1950 from the ridge that is Streatham Hill on one side and Tulse Hill on the other, so as a small boy I was well acquainted with the appearance of a bombed site, universally pronounced by me and my coevals as 'bomsite'. I saw no sign of any bomb damage in Morden and the only time I recall a mention of bombing in Morden was when a friend born in Morden, referred to a house in Seymour Avenue as the one where the bomb had fallen. That would have been at the junction of Seymour Avenue and Cleveland Rise but in five years all evidence of bombing had gone, and the affected houses were indistinguishable from their neighbours.

In Elm Walk, though, Blay had finished his estate and as the shortage of timber was as bad after the Second World War as after the First, the new houses are of a simpler appearance than the ones

that were destroyed. When Harold Macmillan was made Minister of Housing in 1951 his Ministry began the search for a house that could be built without timber. He called it 'the boneless wonder'.

Technical advances since the 1920s included pre-stressed concrete rafters and cast concrete staircases. The first house without timber (apart from the base for the fuse box) was opened in Basingstoke in April 1953 but by then the shortage of material resources was easing. In Chestnut Road and Vernon Avenue it was impossible to reproduce the old Edwardian houses. The claypits that produced the London stock bricks were worked out and there was no time or money for features like ridge tiles or stained glass.

I think I've 'shot my bolt' on what I can say about building in the first half of the 20th Century in the Association's area, but I hope what you have read has proved interesting.

KING GEORGE FIELD INDOOR BOWLS CLUB



**Learn to Bowl - Free Coaching
All Ages & Abilities Welcome**

**Bar - Restaurant - Social Events
Large Car Park**

**FUNCTION ROOM FOR ALL
OCCASIONS**

**Jubilee Way, Chessington, KT9 1TR
Tel: 020 8397 7025
www.kgfindoorbowlsclub.co.uk**

A Memory from Nicholas Fern

The first place I lived in was, as far as I know, Raynes Park.

We lived in a flat in a group of buildings from which I think we could see a railway line and the Carters Seed business. It must have been in walking distance of the centre because my mother said a V1 or V2 exploded near to where she was shopping (so a date summer 1944 [approx.]) when I was temporarily evacuated.

I'd be very grateful if someone with a very long memory or a huge photo stock can help identify exactly where I lived and perhaps confirm and give some details of the V1/V2 explosion

With Thanks and best regards,

Nicholas Fern
nickfern43@gmail.com

{Editor's Note: Mr. Fern sent in a picture that didn't reproduce very well. It was of him and his mother in or around 1947 sitting on the grass outside one of the private blocks of flats in West Barnes Lane (Malden Court?), adjacent to the old Bushey Primary School (now part of Raynes Park High) and within walking distance of Carter's Seeds and Raynes Park Town Centre}.



1553. Coombe Lane, Raynes Park.

The oldest Guide we have is that of December 1964, a significant year because that is when the London Borough was first formed.

*Prior to 1964 there were three constituencies, the London Borough of Wimbledon, and the Surrey UDCs Merton & Morden and Mitcham. The Boundaries Commission then approved changes which removed the constituency of Merton and Morden and divided it between Wimbledon and Mitcham, forming the new London Borough of Merton. Chairman of the rapidly expanding Raynes Park and West Barnes Residents' Association at that time was **Mr. Sydney Morton** who wrote in his Association Notes for the end of the year, the following,*

Christmas Greetings On behalf of the Officers, Councillors, and Committee, I should like to extend the season's greetings and best wishes for the New year to all members; in particular to those who have joined us for the first time this year. I would also like to express my personal appreciation for all the extra work put in by officers and road stewards during the past year which may well prove to have been the most important and difficult in the Association's history.

Burlington Road and Bushey Road Flyovers

A number of members have expressed interest in this project and the Association has been in touch with the Surrey County Council on the subject from whose letter I quote:- "In general the layout provides for through trunk road traffic to be carried

over Burlington Road which will meet the By-pass at a roundabout and for a second flyover to carry traffic bound for Wimbledon over the trunk road traffic to and from Robin Hood Gate. Slip Roads will be provided on either side of the trunk road and a service road will be constructed outside the factories fronting Bushey Road. Pedestrians will be able to cross by the slip roads near the roundabout at Burlington Road at ground level, while at the Bushey Road junction and near West Barnes Lane Bridge, subways will be provided to segregate pedestrians from vehicular traffic. Tenders have been invited and it is hoped that construction work will start early in the New Year; the contract period for the construction of the whole scheme is two years. It is hoped in general, to construct the slip roads at an early stage and transfer trunk road traffic onto these slip roads whilst the fly-overs are being constructed. No traffic diversions will be made other than those within the site". It is hoped that the foregoing information will meet the needs of those who have enquired about the scheme.

Merton Council

There was a report in the Merton & Morden News for November 13 that the new council was faced with the problem of deciding whether aldermen and councilors should wear robes at council meetings and one alderman was quoted as saying that "quite a large body of ratepayers might regard the cost of the robes as a proper charge on them". I feel sure that I am speaking for the Association – and a good many more residents who are not our members – when I say that so far as we are concerned our councilors were elected to do a job of work,

and not parade in fancy dress and that we would object most strongly to our money being wasted in this way.

Membership.

As these notes go to press it is pleasing to record that our membership has just topped the 2,000 mark — some 350 more than we had last year and with the hope of more to come before the Treasurer closes his books in time for the auditors to do their job before the AGM next March. The response from West Barnes has been very good but - assistance is still required for the following roads which are not yet permanently covered: -

Barnard/Errol Gardens, Belmont Avenue, Cobham Avenue, Stanley Avenue, Rookwood Avenue, Consfield Ave, Byfield/Shelley Courts and Burlington Road 145/282. In addition, relief is required to existing road

stewards as follows: Bushey Road/Court/ Mansions, Firstway, Coppice Close, Church Walk, Fairway, Raynesfield and Cranley/ Milburn Houses, West Barnes Lane.

I know that many of you are pressed for time, but it would not, in fact, take up all that much of your leisure to do a worthwhile job on the association — a monthly Committee Meeting, the monthly Guide delivery and spread over the spring and summer months the collection of subscriptions. **WHY NOT VOLUNTEER FOR 1965 AND JOIN OTHER Road Stewards on the general Committee.**

S. MORTON
Chairman



Many will be aware of the extensive building work currently being undertaken at the New Victoria Hospital, Coombe Lane West. Below is an extract taken from **The Guide October 1965** which talks about earlier days....

INTRODUCING THE NEW VICTORIA HOSPITAL

As so few of our members seem to know of the existence of the New Victoria Hospital on Coombe Hill and of the personal service that is obtainable there, the following account of its origin and purpose has been obtained from the General Secretary of this voluntarily maintained Hospital.

Origin and Purpose

When the New Victoria Hospital was opened in 1958, it was the first voluntarily maintained general hospital to have been opened in the United Kingdom for twenty years.

In 1963, the Operating Theatre was thoroughly overhauled and modernised at a cost of nearly £6,000 and this Theatre, of which we are justly proud, provides every facility for the team of eminent Visiting surgeons whose services are available to patients in the New Victoria.

In 1964, an extension was provided to house an improved Out-Patients' Department and some additional beds, a much-appreciated development in both directions.

In general, we should like to repeat what we have always said regarding the status of the New Victoria Hospital; although it receives

no State Aid, the Hospital does not seek to compete in any way with the National Health Service but rather, in a small way, to supplement it, by providing beds where patients may receive, both before and after their operations, the care and attention of their own family doctors, a feature which is welcomed by a great many people.

To residents of Raynes Park and Wimbledon and district generally, the New Victoria Hospital offers a free medical and surgical service (except in the few pay-beds) which is second to none. Every patient is treated as an honoured guest. Readers are recommended to get into touch with the General Secretary of the Hospital at 184, Coombe Lane West, Kingston upon Thames.

John E. Ray
General Secretary



Margaret Sinclair
MSc., DCH, DHP, HPD, MNCH, MNSHP,
SQHP, CNHC Reg.

Clinical Hypnotherapist

Raynes Park, London SW20

www.hypnotherapy-southwestlondon.co.uk

**Hypnotherapy can help with many issues,
such as:**

- ☐ **Stop Smoking**
- ☐ **Confidence and self esteem**
- ☐ **Anxiety and stress**
- ☐ **Fears and phobias**
- ☐ **Habits**

And much more

For further details phone: 020 8395 6766
e-mail: Margaret-hypnotherapy@live.co.uk

ASSOCIATION NEWS

(November 1968)

How Ironical that in the 40th anniversary of the founding of the Association "to get something done about the flooding" in the ward we should again suffer from extensive flooding. It is a wonder we haven't all got webbed feet! Perhaps Nature was stepping in, saying to herself if they can't do anything to mark the occasion I will.

If so, she was jumping the gun for on November 23rd we are holding our 40th Anniversary Dance, and we predict it will be a great night which will put Raynes Park and West Barnes on the map as one of the swingiest of swinging suburbs. So why not come along and have a 'ball'.

In fact, the flooding has caused much distress and is no joking matter. Some residents, particularly in Barnscroft, were very badly affected and it is to be hoped that the Council's post-mortem will result in some action. Of course, no drainage system could have coped with the phenomenal amount of rainfall that preceded the flooding. However, one or two points have emerged from our discussions. Firstly, that many of the playing fields in the area would seem to be inadequately drained - which causes saturation point to be reached quickly in our very soggy clay soil. Secondly the sewerage system in some parts of the ward can't cope with even normal heavy rainfall without flooding, ground floor avatories.

Another possible contributory factor may have been the silting up of Beverley Brook with mud and rubbish. It's the G.L.C.'s responsibility to clear it out. and as this has not been done for over four years, we wrote in July asking for some action - so far

without result. Meanwhile . . . back at the brook . . . people have continued to dump their grass cuttings etc. into it. which has hardly improved the situation. So, **please** dumpers, **don't**.

We are now getting some response from members interested in the babysitting scheme, and a committee has been formed to work out details. It is hoped that the scheme will fall into two categories - a straightforward list of recommended sitters, who will be paid a reasonable rate per hour, and if we can manage it, a points system for those who would like one. However, it is expected that this Will be more difficult to organize and take longer.

Jill Truman, Acting Hon. Secretary



SOCIAL SECTION

40th Anniversary

DANCE

SATURDAY, 23rd NOVEMBER 1968

at

MORDEN ASSEMBLY HALL

near The BEVERLEY, GRAND DRIVE.

DANCING TO THE

BLUE COMETS

8 p.m. to 12 midnight

Refreshments, Spot Prizes and
Licensed Bar

Admission 5/-

Tickets from Area Chairman or
37 BLENHEIM ROAD

The Great Flood of August 1981

August 6th, 1981 will be a date that will be remembered by all the residents of this area for many years to come. This was not a day of high temperatures and clear blue skies. On the contrary, this was the day that the rains came in such magnitude as to create one of the largest floods for many years.

Nationally, too, these organized storms were the worst for five years, and followed the hottest spell of weather for the summer. No sunshine was recorded in this area for about 3 days, which is the longest August period without sunshine for at least 20 years.

Locally, the resulting problems created by the large rainfall were tremendous.

Raynes Park was essentially cut off from the neighbourhood, since the drains were unable to cope with the torrent of water which flooded all the paths under the bridges which carry the railway. Many of the shops in this area were flooded, while other shopkeepers fought valiantly to keep the water out.

But there were far worse situations. Pyl Brook flooded yet again creating an enormous amount of damage in the Kingsway and West Barnes Lane areas.

Manhole covers in the roads were forced up by the pressure of water which then flooded their homes. The Beverley Brook, which flows along the edge of our ward, also flooded creating more problems for the residents of the western edge of West

Barnes. In Motspur Park the shopkeepers fought to prevent the water getting inside their premises, while the residents of Marina Avenue, who are well away from the brook, still suffered large amounts of flooding.

But there were still worse situations. Sewage water was forced from the water systems and flooded into the houses of many residents in Barnes End and Westway Close. This situation is a major health hazard and a concern for us all.

The actual volume of water that seemed to collect in this area was apparent from the car park of Bradbury Wilkinson's, where the water level actually reached the handles of the doors of the cars parked there.

Floods in this area are not new. Indeed, this Association was founded in 1928 in response to the problem of flooding, and during the past 30 years there have been several serious floods. The last one occurred in 1968, when the authorities assured us that this situation would not happen again. So, what went wrong?

Garry Hunt

Chairman

November 1981

[Editors Note: In 2018 Road Steward Brenda Pickford in Marina Avenue told us:

"Yes, I remember it well. I Came home with my children after a morning at a Holiday Project at Holy Cross church, and 'the Heavens' opened! I had just put my car in our garage when the water flooded into it as well as our sheds and the garden up to

our patio. Luckily it didn't come into our house. It came in like a waterfall from the Pyl brook which was full of rubbish.

Out at the front it came half way up our path. Dustbin lids 'sailed down the Avenue as well as a canoe! Some of the children had great fun.

Later, the Pyl was cleared and the pumping station put in, which has helped with other heavy rains, but our garage, sheds & garden are still being flooded from time to time. We could use a little rain at the moment but not that much!"]

July 27th, 2018



Guide EDITORIAL: From FEBRUARY 1982

In defence of the Realm

I see in today's paper that Harvey Smith (show jump specialist) has been fined £75 for assaulting hi-fi dealer Stephen Rusling at a dinner party given by Harvey's Sponsors Sanyo last August. Harvey Smith is an ardent Royalist who strongly objected to Mr. Rusling's remarks that the Royal Family ought to be exterminated. According to reports, said Harvey: "The Royal Family is about the only good thing this country has left."

It would be interesting to reflect on what the rest of us might feel about that remark! But the reference to Sanyo reminds me of certain statistics that have recently been circulated about Japan.



It appears that the Japanese have:

1. The lowest crime rate in the world
2. The lowest unemployment figure (despite employing 60,000 robots in their factories against 220 in this country, though it is fair to say the unemployment figure is rising.
3. Hardly any strike situation
4. No rowdyism, no graffiti and complimentary behaviour among young people.
5. The highest expectation of life in the world
6. A situation where it is perfectly safe for people of either sex to go out at night without fear of being mugged or molested. (In Tokyo there are 14 million people who live in congested conditions), etc. etc.

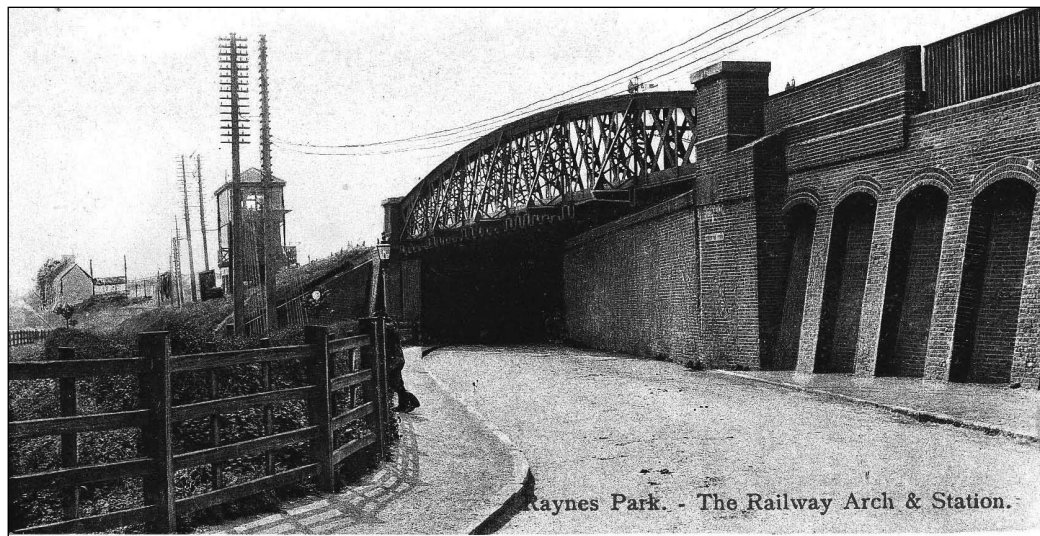
My son has been to Japan three times during the past 12 months and bears out these statistics.

A similar situation regarding behaviour, I am told, exists also in China.

There must be something about the differences in culture between East and West which deserve some attention, it would seem. Is it permissiveness, discipline, child care? In America I read, children are brought up to defend their rights as citizens, even to the extent of possessing guns for self-defence. Perhaps this leads to a more aggressive bloody mindedness. On the other hand, some people believe that as those in the East make “progress” they will go the same way as the rest of us!

I would rather not live to see it! Meanwhile, it looks as though we shall have to put up with wholesale disruption on the railways during a winter the like of which we have not seen for many years. Of course, nobody WANTS to hurt the public, but if people suffer hardship and inconvenience in the middle of a hard winter, then it is just “too bad”. Services and manufacturing industries alike today seem to exist mostly for the people who work in them.

Ray Lawrence
Editor



Raynes Park. - The Railway Arch & Station.

FROM THE CHAIRMAN'S DESK

July 1997

It won't have escaped the notice of those of you who read these columns that there are some months when I am dredging deep for something interesting to write about, and others when I could fill the pages of the entire Guide and have difficulty in stemming the flow. This month is one of the latter -so I'll waste no more words and plunge straight in.

New Council Leader

Our warmest congratulations to West Barnes' resident; Mike Brunt on being elected the new Leader of 'Merton Council. Having worked with Mike on the Highways (Environmental Services) Committee in last four years on the Council, I know him to be a fair, sincere and dedicated man. We are lucky to have him, and we wish him every success.

Being a local, Mike will be only too familiar with the traffic problems we must face. However, with his new responsibilities he is unlikely to join us for our traffic debate in July. Nevertheless, we hope that he will be able to accept our invitation to come and talk to us in September or October, about the Council and his vision for the future of Merton.

Traffic Meeting 19th July

Where traffic is concerned, many residents of Raynes 'Park and 'West Barnes are justified in feeling that living here is a nightmare. How often have you asked

yourself "why don't THEY (the big white chiefs on the Council) do 'this' or 'that' to try and improve the situation? And how often have you thought "road safety and traffic planning in 'Merton? What a joke, I could do better myself"!

Well, now's your Chance. The Association has been championing the cause (and champing at the bit in the process), for action in this area for a very long time.

Grand Drive, for example, is on record as being the third most congested road in the borough, and it is now four years (February 1993) since we were promised an Area Traffic Study for West Barnes, but it simply hasn't materialized. The priorities have lain elsewhere.

Nearer and nearer draws the time, however; and I like to believe that we have waited so long, simply because there is just so much that needs to be done, that the Powers that Be have decided to leave us till last. The icing on the cake, as it were.

Although the West Barnes Area Traffic Study has still not been scheduled, we asked Council Officers if we could have a meeting now, so that they can tell us HOW they prioritize these things; WHAT they have done elsewhere; but MOST IMPORTANTLY, learn from you what you believe should be done in the area, and listen to YOUR ideas.

Having taken your views on board (which we hope is "political speak" for taking heed); Council officers will, we think, be in the best position to tailor their Area Traffic Study (which will NOT, if we have anything to do with it, take place during school

holidays) to meet the needs as perceived by residents. They will also be more prepared to take the opportunity of putting in a bid for special government funding should it unexpectedly arise.

We are delighted to be welcoming Ms. Caroline Broom – the new Director of Street Management, Environmental Services Department -together with her colleague Mr. Ray Puddy, who is a longstanding Traffic Officer at Merton and must know its streets like the back of his hand. We are also inviting representatives from the Police, the emergency services, London Transport and Railtrack; but don't hold your breath where the latter's concerned, the company seems to be too intent on making money to even answer letters, let alone get involved with local residents.

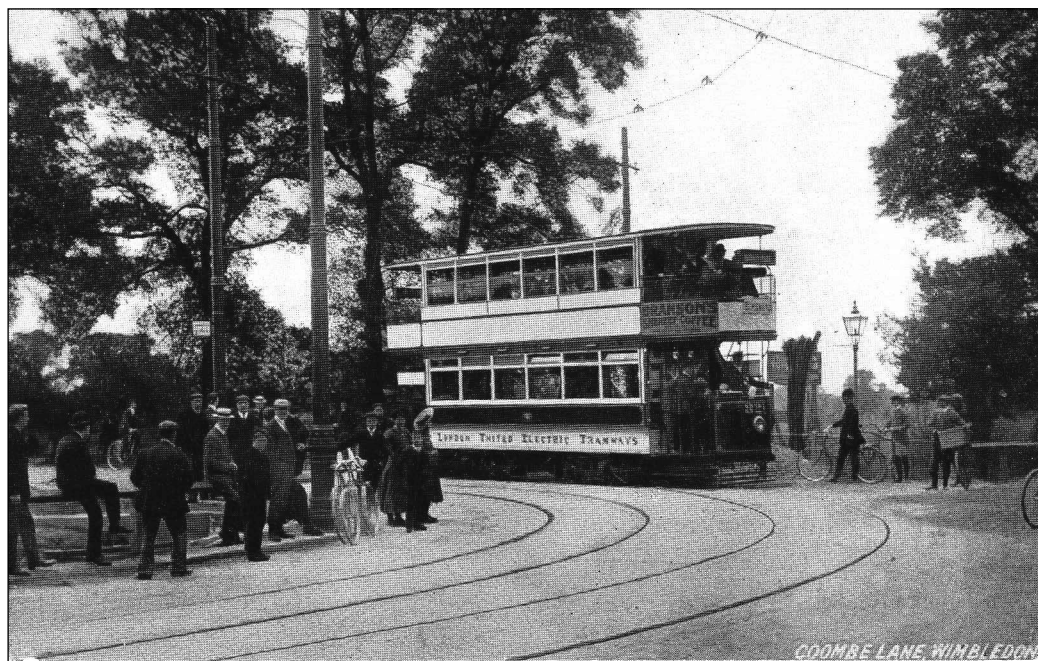
Thursday 10th July, at Holy Cross Church Hall, Adela Avenue, Motspur Park is YOUR chance to have your say. Don't miss it!

Lightening our Darkness

Calling all artists ...an exciting initiative has come forward from the Apostles Residents' Association to decorate the inside of the "Tunnel" – that's the pedestrian/cyclists' part of the skew arch, adjacent to Wyke Road.

I did a metaphorical jump for joy when I read about it in their Association's newsletter, and quickly contacted Ian Mayhew, who is the prime mover.

Every time I have walked through the very much used 'black 'hole of Raynes Park' — 'the Cattle Arch a dank, dismal and running with water - I have thought



Coombe Lane, Wimbledon

that it would benefit from such treatment, but I've simply never got around to doing anything about it. (Don't you just hate it when someone else steals your thunder)? Of course, one would have to incorporate into the design, somehow, the drips and slime, but ANYTHING would be better than what we have now.

We are putting our full weight of approval behind the scheme for The Tunnel, and want to support the initiative in any way we can as a precursor to 'doing up' the Cattle Arch. An excellent millennium project, don't you think?

If you have some artistic talent, ideas for designs, money or labour to contribute, Raynes Park needs YOU. Together, we can make something of both eyesores yet.

'Meanwhile, the apparently profit rich Railtrack, cannot even be bothered to act on

their promises to clear the embankments at and around the station of rubbish, re-open the ladies' loos, or answer our many letters.

We have ALL said that it would be much more sensible to use part of THIS arch as a cycle lane but, according to the Council, they are STILL, after two years of the cycle track (is it ONLY that long?) trying to negotiate permission for this change with Railtrack. The time has come, this walrus says, to put a stop to all the shillyshallying and simply get on with it.

Cannon Hill Common

The same must be said about the Council's tardiness towards the plight of Cannon Hill Common, which has suffered horribly in the last couple of months from the vagaries of the fisherfolk (rather too pretty :1 word to describe some of the characters



Elm Walk, Raynes Park

(sometimes 36 at a time) who are plundering the beautiful Cannon Hill Lake, and now, even camping overnight).

The Council has had its answer about what we, and the Friends of Cannon Hill Common, want to see happening – that this beautiful small park should be preserved at any cost - the Council must ACT NOW!

Bab Holloway, Chairman of the Friends, also came to our last meeting to entreat the

help of everyone in alerting the Council or the Police if they spot anything untoward happening on the common. There have been recent incidents where louts have been racketing over the meadowland in their cars, and evidence of drug abuse.

PLEASE be vigilant, and PLEASE help. We may not be able to cure the problem entirely, but at least we can chase it away from this beautiful oasis.

Jill Truman



Anniversary Messages from our Advertisers

“St. Matthew’s Church sends congratulations and thanks to RPWB Association for 90 years of service to the community.” *St. Matthew’s Church*

“W. A. Truelove & Son Ltd congratulate The Residents’ Association on their 90th Anniversary, what a wonderful achievement.” *W.A. Truelove & Son Ltd*

“Happy 90th RPWB - a great asset to the community and deserving of all our support! Love, Elegant Curtains Limited” *Elegant Curtains Limited*

“Congratulations! We really value the personal and local touch that the Guide offers. Our father, Tom Hellings, began roofing with his first Guide advert over half a century ago. Now we’re tentatively into the third generation of Hellings roofers. The Guide is trusted by its readers and advertisers, long may that continue. Here’s to the next 90 years!” *Hellings Brothers*

“Many Congratulations to The Guide on your 90th Anniversary Year – The Guide is an invaluable source for local news and information – keep up the good work!” *Fuller Gilbert & Company Ltd*

“Congratulations to everyone on completing 90 years. This could only be achieved by the teams’ (past and present) dedication, hard work and talent. Thank you for a great Guide serving a great community, keep up the good work. I hope The Guide continues well in the future. Congratulations to you once again.” *Darren Sharman, Flying Spark Electricians*

“We’ve been members of the RPWBRA for 36 years & have advertised in the Guide for almost 28 years. We feel very lucky, as the Association represents everyone in our community. It tackles issues so efficiently & professionally. The people involved in the smooth running

of the Association do so voluntarily & do the job wonderfully. Congratulations on your 90th Anniversary & a very Big THANK YOU.” **Keith & Anna Gay**

“Congratulations to The Guide - Customers I work for have told me the Guide is the only booklet they look in, for local tradesmen in the area!” Dave Richardson, 1st Call Glazing
“AJM Fencing send warmest congratulations to the RPWB Guide on proudly providing ninety years of support and guidance to the community it serves.” **Mike Ridley, AJM Fencing**

“Congratulations on the 90th anniversary edition of the Raynes Park Guide. Many thanks for the support of the Guide publication with advertising my local plumbing & heating (bathrooms & kitchens) business – I’ve used your services for over 25 years now and it was the first local magazine to take my advert!” **Andy Reeve Plumbing & Heating**

“Congratulations to all those involved in the running of the Residents’ Association. The Association is at the heart of the community and keeps our community spirit strong” **Margaret Sinclair, Clinical Hypnotherapy**

“Well done to the Residents’ Association for reaching the milestone of 90 years – let’s look forward to your centenary!” **Raynes Park Townswomen’s Guild**



Grubby Carpets & Upholstery?

....Real Specialists In This Industry Are Like Gold Dust!

Our unique system will make soiled carpets & upholstery look as good as new and even some of the grubbiest ones too!



- ✓ Carpet Cleaning
- ✓ Upholstery Cleaning
- ✓ Stubborn Stain Removal
- ✓ Rapid Drying

Customer Service.Knowledge.Passion

To Book Your **FREE** Survey Call **0208 542 9082**

www.touch-dry.com

History of The Guide

I had hoped to write a brief history of the Guide from its formative days, but sadly, unlike the Residents' Association itself, early copies of our monthly journal seem not to have survived (or have they...? See below*).

For the first 40 years of the Association's history, the best I can do is to reproduce part of an article from a previous edition of the Guide, in **1985**.

"In front of me I have a bound volume. It is octavo size i.e. 8 by 5 inches, and it contains early issues of the Guide. The first one is entitled 'Handbook for 1932' and is printed in the same size type as the present Guide but is double column width. In those days it was known as Raynes Park Residents Association, having been formed because of extensive flooding in the Bushey Road area in 1928. In the same year the new Association amalgamated with an older body, the Grand Drive Residents' Association, and the influx of these new members proved of great benefit to the Association. Each year had shown an increase in membership and it was found possible to reduce the annual subscription from 5/- (25p) to 2/6 (12½p)!"

These early Guides, before the forming of the various sections, such as the Camera Club, the Horticultural Section, Music for All, as well as the Stamp Club (now defunct) and the West Barnes Singers were much more comprehensive in their news items because they could afford more space. The typeface was also

smaller and there were more adverts. The number of pages in the 1930s seemed to vary from 16 to 20. There was a fair amount of Council news, ratepayers' news, Rambling Club news, Nursing items, education items, forthcoming events, Townswomen's Guild news, household news, Hospital Savings Association, fire alarm items, Chamber of Commerce, traffic information, concerts and many other items.

There was also a monthly paragraph called "Shop Locally" and the whole schedule for the Raynes Park Horticultural Society's Flower Show was printed.

In April 1932 membership was close on 1000. These early issues also contained many warnings about burglars being very active in the locality and there was an amusing item which stated that the road stewards could not guarantee to deliver the Guide where there was a 'Beware of the dog' sign!

Whist Drive news often occupied a whole column and there was also Gardening News and all the films for the month at the Raynes Park cinema, the Rialto. There was also a paragraph for questions and a jokes column.

Printing, relative to the financial situation, was a good deal less than it is now, I am quite sure, and certainly we could no longer afford to have bound stiff-cover volumes.

There was a General Information section which gave notice of Quarterly General Meetings, Births, Deaths and Marriages,

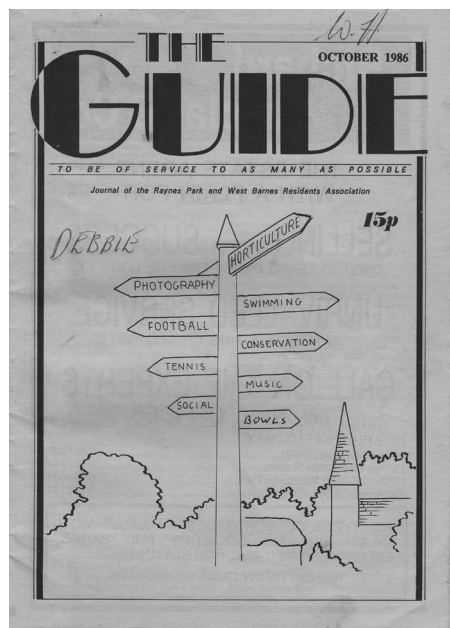
Maternity and Child Welfare Clinics, Antenatal Clinics, Dental Clinics and the PDSA. There was also a Safety-First Section; Road Accidents (the two don't seem to have been linked Unfortunately!); Post Office and library times. Surprisingly in those days there were no small ads."

Fast-forward to our oldest surviving copy, from December 1964 (pictured), when we had only recently become the Raynes Park & West Barnes Residents' Association, following amalgamation with the latter area. The page size was then roughly 10 x 7 inches (quarto). The Guide was printed by a local company at the Raynes Park end of West Barnes Lane, but increased costs had led to it being rather thin in number of pages. Many local interests were still covered however, and it's pleasing to note that Association membership had just topped the 2000 mark. Being December, there was a seasonal note which is still valid today: "Christmastime comes round again, Peace on Earth, goodwill to men, Love and joy in each abode, Careful driving on the road. Safe for everyone, I'm thinking, if all drivers cut out drinking!"

The Guide continued in the same format into the 1980s, then produced by another local printer, Howard Brown Ltd, in Motspur Park. A further drive to keep costs under control, which seems to have been a theme over the years (!), led in 1985 to a reversion in page size to something closer to the familiar format published nowadays, although still carrying advertising on the front page.



Within another year, during 1986, production had transferred to Whitecroft Printing in Hackbridge, and the Guide sported an updated front cover 'signpost' design with an art deco look.



Membership grew to nearly 3000 homes during this period. Whitecroft evolved, in 1988, into Tremar Graphics, still our printing partner today, now based in Merton. It was not until 2004 that the Guide had another new look, with the adoption of today's familiar front cover design, by Pamela Robinson (who sadly passed away earlier this year).

Guide, particularly pre-1960s? If so, we'd love to see them, and copy them for our archives. We'll of course return any originals if required. Please contact me on:

**020 8949 7593. Or email:
dickcoleman@btinternet.com**

Dick Coleman

*** Do you have any early copies of The**



Motspur Park in the Snow



Back to the present and a very
happy Christmas and New Year
to all our readers





Professional Tree Services

**Call us today to arrange
a free site visit**

- ✓ Fully insured and qualified
- ✓ Free quotes with no obligation
- ✓ All works personally supervised

**Local family run business
based in Wimbledon Chase**

For more information and genuine
testimonials please visit our website,
Google Business Profile or search for
us on Nextdoor.com

Tree Pruning



Tree Felling



Tree Planting



Tree Reports

020 3581 1569

07514 280 460

www.greenindustree.co.uk

charles@greenindustree.co.uk

Sandringham Avenue

SW20 8JY

SACRED HEART PRIMARY SCHOOL HOPES YOUR VOTES WILL WIN IT £25,000 GRANT FROM THE AVIVA COMMUNITY FUND

Sacred Heart Catholic Primary School, New Malden, has entered the Aviva Community Fund Initiative and looked for the support of the local community to win a grant of £25,000 for the school.

Serving nearly 400 children from the areas of Wimbledon, Raynes Park, Motspur Park, Worcester Park and New Malden, the school, situated on Burlington Road, only benefits from two concrete playgrounds and sadly lacks green space.

Sacred Heart's active Parent Staff Association (PSA) applied to the Aviva Community Fund in the hope of winning £25,000 to invest in transforming the school's outdoor spaces. Instead of plain concrete there would be nature spaces, fun seating areas, a sensory corner, and lots of opportunities for physical activities including a climbing wall, basketball nets, new

play apparatus and sports equipment, and more.

Sacred Heart staff, parents and children are very excited about this potential project and are working hard to make it happen.

Like all state schools, Sacred Heart faces ongoing funding cuts. Winning the £25,000 grant could have a positive impact on the children and the local area.

"In today's digital world, where childhood obesity is an ever-increasing issue, we'd love to transform our children's play area to make physical activity fun, challenging and above all something they can't wait to partake in!" says Helen Rattos, PSA Chair. "We hope that the families, friends and local community will back our bid wholeheartedly and help make our school a truly wonderful place to learn."

If there is anything more you can do to help, contact

Helen Rattos, PSA Chair
sacredheart.psa@gmail.com
07970 403061



Membership Enquiries to

Andrew Barwick (8543 0978) andrew@thebarwicks.com

The annual subscription of £3 includes a free monthly copy of "the Guide" either hand delivered by one of our volunteers or via email if out of area.

NEIGHBOURHOOD WATCH

Theft of and from Motor Vehicles

Over the last few months there has been an increase in the number of 'theft from' and 'theft of' motor vehicles. Many of these crimes have been reported where there has been no sign of forced entry to the vehicle or the vehicle has been stolen with the lawful owner still in possession of the keys.

There are two main locking systems for vehicles, these are Key Fob and Key less. Both can leave your vehicle vulnerable to crime if certain precautions are not taken.

Key Fob entry

The system works by sending random combinations of code to the vehicle each

time the fob is pressed. As copying the code is therefore useless the thieves have come up with another way to prevent you from locking your vehicle.

Thieves are jamming the signal from your key fob to your vehicle by using a number of different devices. These devices can be purchased from as little as £2 from the internet and come in many forms such as garage door openers and house light controllers/dimmers. Many of these devices act to block your key fobs when you attempt to lock your vehicle.

Thieves can block signals in whole areas such as car parks or streets by hiding these devices in bushes with a clothes peg activating the device for long periods of time and without the need for them to be in the vicinity.

There is a solution. Once you have

howell jones
solicitors

focused on you

www.howell-jones.com

The Raynes Park solicitors

- Local knowledge
- Individual service

**Whatever the problem, we care, we listen
and keep you informed**

- Wills & probate
- Conveyancing
- Inheritance issues
- Business services
- Disputes
- Litigation

- Family
- Debt recovery
- Property disputes
- Employment
- Powers of attorney
- Personal injury

Call us free and without obligation

020 8947 7991

activated your key fob, **YOU MUST** ensure the lights have flashed indicating the car has received the signal, and then check the vehicle is locked by lifting a door handle.

Keyless Car entry

The signal for a vehicle with keyless entry cannot be jammed. However, the signal used for vehicles with this form of security system is unchanging and broadcasts continuously between the fob and the vehicle. **IT CAN BE COPIED.**

Fobs made by different manufacturers use different ranges and the signal can vary in terms of strength and useable distance. This is the distance between the vehicle and the range in which the vehicle will be unlocked. This can be up to 30 feet from the vehicle. For many people this could be less than the distance between your vehicle and where you leave your keys once inside your home. **YOUR VEHICLE MIGHT NOT BE LOCKED.** Alternatively, if your fob is transmitting continuously, the distance

between where the device is in your home and the pavement, driveway etc. may be enough for a potential thief to copy the signal. Once copied the thief can not only enter your car but also steal it or any property within it.

The advice from Thatcham is as follows:

If you have a vehicle with a keyless entry system, keep the key in a **'Faraday Cage'** where the signal cannot escape (or you can line a Tupperware pot with foil and get the same effect). This is the same advice as given to us in relation to tap credit and debit cards. You can now purchase small metal credit card cases at an affordable price. You can then remove the plastic card holders and keep your key fob in there. Search for an RFID blocking case/wallet.

Lee Roberts

Neighbourhood Watch Manager

Tel: 020 8649 3213

Email: lee.roberts@met.police.uk

LOCAL INDEPENDENT TRADITIONAL CARPENTER/LOCKSMITH

Local traditional carpenter with 20+ years' experience in all aspects of carpentry.
From 1st & 2nd fix, kitchen fitting & locksmith services to bespoke furniture.

Personalized storage solutions & sash window repairs/restoration/re-cording.

For a free no obligation quote, call Marlon: 07724 942606 or email:
robertsandsoncarpentry@gmail.com

No fixed fee, call out charge, or specialist service fee.

I provide a direct material costs breakdown and charge a flat labour fee.

*Roberts & Son wish Raynes Park & West Barnes Residents' Association
a very happy 90th Anniversary*

RAYNES PARK ASSOCIATION

Notes of a meeting held on 6th November 2018

Waste & Recycling Collections. There was comment and discussion on the implementation of the new waste and recycling collections with considerable criticism. It was agreed the Chairman would write to the Leader of the Council on behalf of the RPA.

Update on Land Transfer at the South Railway Entrance.

Chris Larkman reported that the final agreement seems to be imminent, but that the whole process still meanders on. [Post Meeting Note: Paul McGarry reported that he had chased the lawyers and they are waiting to hear back from Network Rail].

Feedback from Meeting with David Langton, Network Rail Head of Communications.

Chris Larkman reported on his meeting. David Langton is Head of Communications SW Division. He is sympathetic, but Chris questioned his authority to get things done. **Encroaching Shrubs.** Network Rail now confirm that an order has been placed to cut back the growth near the entrance to 'Waitrose' car park and on the north side of the Skew Arch.

Embankments. David believes it will not be possible to maintain the embankments as requested for Health & Safety reasons.

Footbridge: NR came up with an absurd sum for painting the footbridge. Chris Larkman emphasized the urgency of this piece of work given its prominence in Raynes Park.

Wooden Fence on Platform 1. NR have confirmed that this will be removed.

Japanese Knotweed. NR have now cut and treated the area covered by the weed on the south of the Skew Arch and will continue to treat it twice-yearly over the coming 3 years.

Kiss & Ride. This scheme was part of the S106 agreement for the Rainbow Estate development. However, as CrossRail2 appears to have jeopardized these plans the Kiss & Ride plans are on hold.

Station Entrance. David Langton recognized RPAs concern at the state of the main station entrance. It was pointed out the Tony Edwards had provided a summary of the work needed to improve the station décor some time ago. Chris Larkman concluded that action on the embankments, footbridge and railway entrance were the priorities.

Feedback from Meeting with Paul McGarry & Neil Milligan LBM with Chris Edge, Chris Larkman & Tony Edwards

Station See feedback above.

New Malden – Raynes Park Cycle Route. Paul McGarry to confirm with RPA the route to be taken. It appears it will go along Somerset Road then on the west side of West Barnes Lane before crossing at the lights. There was some discussion as to whether in fact cyclists would cut the corner by going through the 'Waitrose' car park. [Post Meeting Note: Response from Paul McGarry: The route comes out of Camberley Ave and will run north up West Barnes Lane to connect with Coombe Lane. Our cycle engineer is drawing up plans for that section for consultation in Feb 2019.]

Danger Points in RP. Concerns continue

about the one-way system and the number of vehicles that attempt to go the wrong way. The signage at this junction is minimal and needs to be improved. Chris has reported this to Future Merton who are looking into it. The RPA is campaigning for the removal of the four parking spaces outside the old Man's Restaurant for safety reasons.

Free 20 Minute Parking. Following the introduction of 20 minutes free parking on the south of the railway at Raynes Park, RPA has requested 20 minutes free parking on the north side. It was reported that Mitra Dubet, parking manager and refused this request. Paul McGarry said he would follow up on this.

Bins on the North of the Skew Arch. Chris Larkman is in discussion with Cllr Stephen Crowe with a view to meeting the responsible officer from LBM to plan for the removal of these.

Area to the South of the Skew Arch. Tony has plans to position some temporary seating in this area – made up of pallets. Chris Edge suggested purchasing a redundant seat and

repairing it for use in this area.

Strip Drain on Footpath between the Station and Waitrose. It was suggested that Tom Sly at LBM is the person to contact. **[Post Meeting Note:** Response from Tom Sly: This section of road is on the High-Risk Gully Cleansing schedule which is due to be commenced in from next month, he will ensure this is prioritized. He has also noted that there a raised gully cleansing request had been received via LBMs internet form Veolia, to attend these drains. This will be done over the next week.

Advertising. An advertising hoarding appeared on the fencing between the station and Waitrose. LBM dealt with this efficiently and it was swiftly removed!

CrossRail2. Jerry Cuthbert advised that The Independent Affordability Review has reported to the Government. Various lobby groups are now trying to influence the outcome.



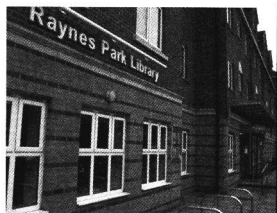
GLAZING REPAIRS

- * Misted Sealed Units Replaced * Locks Replaced *
- * Window Hinges & Handles * Privacy Film *
- * Mirrors * Safety Glass * Cat Flaps Fitted In Glass *
- * Leaded Glass Repairs * Secondary Glazing *
- * Boarding Up Service * 30 Years Experience *
- * Local Business * Free Estimates Given *

Tel: 020 8543 5656 Mob: 07742 822930

www.1stcallglazing.co.uk

1st Call Glazing, 80 Westway, Raynes Park SW20



RAYNES PARK LIBRARY NEWS

Coming up at Raynes Park Library

To reserve a place where required, talk to staff, call 020 8274 5718 or email raynespark.library@merton.gov.uk.

Preview

Steps to Work Thursday, 6th, 13th, 20th and 27th (12.30pm – 2.00pm)

One-to-one sessions will be arranged to support Merton residents 19 years and above who are long-term unemployed (minimum of 6-months) and are actively seeking full-time work. Booking is required.

Drop-In Police Surgery - Monday 10th December (10am-11am)

Come and discuss issues that matter to you in your community with your local officers.

Arty Social, 7th, December

All events are on Fridays 3pm (Term-time only)

Join our FREE friendly art club led by students from Kings College School. Beginners are very welcome. Get creative, learn new techniques and share ideas.

Drawing, still life, painting, sculpture and more!

Action on hearing, 18th, December Friday (11am-4pm), 15th January – Tuesday (11am – 4pm)

Action on hearing loss is coming to Raynes Park Library to keep you informed and connected about hearing loss, deafness and tinnitus. Come to our free information event to find out about the support you are entitled to and equipment available to help your hearing improve. No Booking required.

X-Mas Kids Craft, Tuesday 18th December (3pm – 4pm)

Come and take part in a fun-filled craft session for little ones. All ages welcome, no booking required, all materials are provided.

Explore Learning, Friday 18th December (2pm-3pm)

An inspiring free workshop to help your child with 7,9,11 and 12 times tables. This workshop will help them shine and grow in confidence. Book your free place with a member of staff today. You can also find out more about explore learning and their award winning Math and English Tuition at:

www.explorelearning.co.uk/Children's/Tuition

Kids' Craft Thursday (11am - 4pm), 3rd January

All ages welcome to a kid's craft event. No booking required. Materials provided.



CLOSING DATE

for all contributions and advertisements is the 10th of the month preceding publication.

News from the Friends of West Barnes Library

(next to Motpur Park Station)



New Events

Saturday 1st December 2-4pm

Christmas Flower Arranging Workshop.

Christmas Flower Arranging with Alison Honor, spaces are limited, £5 payable in advance. Please sign up at the library or phone 020 8274 5789. (Please bring either secateurs or scissors)

December 3rd, 10th and 17th 1-2.30pm

Festive Coffee Afternoon

Join us for coffee, teas and delicious mince pies. No need to book, just turn up!

Tuesday 4th December 1-2pm

Police Surgery

Discuss any issues or concerns with your local police officers.

Friday 7th December 2-4pm

Online e-resources Support

Learn how to access ebooks, audiobooks, our reading app Libby: No need to book, just turn up!

Saturday 8th December 1- 4pm **The Rendezvous Annual Christmas Fair**

Get into the festive spirit at the Rendezvous Christmas Fair, there will be a wide range of stalls including home baking, bric-a-brac, and knitted items. There will also be a raffle, games and refreshments offering tea, coffee and delicious cakes.

Thursday 13th December 6-8pm

West Barnes Library Christmas Volunteer Get together

Annual Christmas event for West Barnes staff and volunteers, A celebration of all their help and support throughout the year

Saturday 15th December 10-12pm

Christmas Craft Workshop

Join us for a Christmas craft session. No need to book, RBdigital and just turn up.

Friday 28th December 11-12pm

Explore Learning Workshop

Pop on your hard hats as the children become architects. They will learn the areas and angles required construct the homes of the future. Can they tell their right angles from their acute? Spaces are limited, please book with library staff



**Want an Ad?
for details
Dick Coleman
020 8949 7593**

TENNIS CLUB NEWS



Winter Tennis at RPRLTC

In addition to our regular schedule of weekend club social sessions at 1:30pm, we have recently introduced a new regular monthly event called "Coach-led" social where our fantastic Head Coach, José, leads us in fun games and drills for an hour before pairing people up for a few sets of convivial doubles with players of the same standard. If you are a player returning to the game or wondering how to make the step-up tennis lessons to playing tennis, this is a great session to attend. The next one will be **Saturday 8th December, starting promptly at 1:30pm.**

Also in December we have our annual "burn off your Christmas lunch" fun tournament on **Saturday 29th December, at 1pm.** These tournaments involve quick-fire games with players rotating partners every fourth one, making it accessible to all playing standards and allowing you to meet many of our friendly members. For new members joining on 29th December we will have a special deal available: membership through to the end of the club year on 31st March will be just £35.

For more details, come and visit us in Meadowview Road, see our website <https://www.rprlrc.co.uk>, or Telephone 07743 226500.

Nathan Dimmock



Police Contact Details (Available 24 hours a day)

Emergency: **999**

Non-Emergency: **101**

Local Safer Neighbourhood Teams

(For direct contact with the team but lines **not** monitored 24hrs a day)

West Barnes: 020 8721 2454
westbarnes.@met.pnn.police.uk
**You can now follow us on
TWITTER @MPSWestBarnes**

Cannon Hill: 020 8721 2455
cannonhill.@met.pnn.police.uk
**You can now follow us on
TWITTER @MPSCannonHill**

Lower Morden: 020 8721 2456
lowermorden.@met.pnn.police.uk
**You can now follow us on
TWITTER @MPSLowerMorden**

Raynes Park: 020 8721 2459
raynespark.@met.pnn.police.uk
**You can now follow us on
TWITTER @MPSRaynesPark**

Total Policing is the Met's commitment to be on the streets and in your communities to catch offenders, prevent crime and support victims. We are here for London, working with you to make our capital safer.

A Walk on the wild side? No! A trip to the WEST END (of Coombe Lane)

Over the years I have had the privilege of getting to know Raynes Park and West Barnes very well and have seen many changes.

One was the loss of the beautiful elm trees that bordered West Barnes Lane from the Crossing to its junction with Crossway. Another was losing the delightful Carter's Seeds gardens and seeing as a small girl - the Thirties designed Odeon cinema that graced Shannon Corner – which itself was so named because of a similar beautiful Art Deco building opposite the cinema - which housed Shannon Systems. This at least should have been listed.

There have been good changes too, such as the community spirit that brought about the preservation through volunteers of the Sir Joseph Hood Memorial Playing fields at Motspur Park; the Friends of Cannon Hill Common; the taking over and running of the Paddock Allotments so that it is a thriving social centre as well as a horticultural hot spot, and the acquisition of our own HQ at the Pavilion, 129 Grand Drive.

It is the vibrancy of Raynes Park town centre which I would also like to celebrate. This has no doubt

been aided by the Raynes Park Association (an umbrella group of businesses and Residents' Associations covering Raynes Park) in overseeing the enhancement of the area with the introduction of many visual improvements. Raynes Park town centre has also been noted in the media as being one of the most thriving local centres of its size in London.

However, its not just the town centre we should be celebrating. If you take a trip to the West End of Coombe Lane you will find equally thriving entrepreneurial businesses, many of which have won awards in their own right for the services they have to offer or have been selected by the 'great and the good' because they have earned such a good reputation for what they do.

For those of you who haven't ventured forth to Raynes Park's West End, may I introduce you to some of the great services that you will have missed.

Jill Truman



SEASONS FLORISTS

253 Coombe Lane
West Wimbledon
London SW2 00RH
Tel: 020 9847 6654



Seasons Florists was established in 1986 by Mari Lawrence who has built up a fine reputation at the leading edge of designer floristry and is known for the place where you can find that "something different", beautifully presented, together with efficient and knowledgeable staff. We hold our own classes and demonstrations too.

Seasons Florists always carry an inspiring range of flowers including tropical and exotic varieties. We stock a wide variety of flowers from the Dutch markets as well as from our British growers. We are members of The British Retail Professional Floristry Association, Good Florist Guide, Merton Chamber of Commerce and Federation of Small Businesses.

Mari and her staff are fully experienced in all aspects of floristry and between them hold various qualifications including NDSF (National Diploma Society of floristry), ICSF (Intermediate Certificate Society of Floristry), MSF (Member Society of floristry), City and Guilds and have been successful in numerous UK and overseas floristry competitions.



FIONA WATT

Optometrists
Contact Lens Practitioners

265 Coombe Lane, West Wimbledon
London SW20 0RH
Tel: 020 8944 6886



Originally from Scotland, Fiona Watt came down to study at the City University and her first job was in Wimbledon. She liked the area so much, she stayed and established her optometrists' practice in 1990, at 257 Coombe Lane before moving it about 12 years ago, to the bigger premises at 265. Fiona has always worked hard for her business and has only taken time off to have her 2 children. Though she does find time to fit in her golf, horse riding and Bridge!

Her team of staff including four optometrists have an extensive range of optical skills and are committed to providing the highest continuity level of eyecare, professional (and personal) service and quality optical products. Together with our company mascot, Merlin the black Labrador, they look forward to inviting you to our modern, state of the art practice.



COOMBE RESIDENTIAL

259 Coombe Lane
Wimbledon, London
SW20 0RHTel: 020 8947 9393
enquiries@coomberesidential.com



Coombe Residential, a wholly independent business, has served this area for nearly thirty years. During this time, we have sold some properties twice if not three times over. Our personal service has earned us constant repeat business from many loyal clients.

Our team have been longstanding residents of both Coombe and Wimbledon and extremely knowledgeable about both areas. We offer a unique expertise and bespoke service in sales, rentals, new builds and refurbishment as well as our new concierge service.

We are pleased to support and sponsor nine local schools and a multitude of charities as well as the Thames Youth Orchestra and The Thames Philharmonic Choir.

For more information, please visit our website. Not all the homes we offer for sale or rent are advertised (due to some client's needs for discretion), therefore, we recommend a private consultation to enable us to understand your requirements.



BAKOU

Stunning designs for glamorous girls

267-269 Coombe Lane
London SW20 0RH
020 8947 9797
www.bakou.co.uk
info@bakou.co.uk



Founded 14 years ago as part of a franchise, Bakou became an independent boutique in 2014.

Bakou is a specialist, destination boutique, catering for sophisticated ladies, sizes 14-30. We offer high quality, stylish, elegant and mainly European fashion collections to a niche market, largely neglected by mainstream retailers.

Our collections are fabulously diverse and there is something to suit all skin tones and tastes! Carefully chosen fabrics and textures fall beautifully to create soft, feminine and chic silhouettes. Everything is designed to flatter the fuller figure and add a touch of glamour! We also have a gorgeous selection of accessories; gloves, scarves and necklaces, to suit all ladies. A snapshot of our collection can be seen on our website, www.bakou.co.uk.

Our exceptional personal service ensures that our customers from around the globe return to us time and time again!



TONY'S

348 Coombe Lane

London SW20 0RJ

Telephone: Rishin on 07939228318

rishbiz@gmail.com



For over 35 years TONY'S has been run by local residents, Rajni & Shailesh Patel and their families, offering an excellent service providing food and wine of quality, and much, much more. As one customer put it "if you need it, you can usually find it at TONY'S".

The Patel family bought TONY'S in the early 80's and have never looked back, steadily building a large range of 'hard to find' and quality products backed up by an ethos of good service with a smile. This has enabled them to build TONY'S into the larger 'GO TO' convenience store it is today.

Rishin the son of Shailesh has recently taken over the day-to-day running of the business, while the senior members of the family step back to take a well-earned rest. Rishin has added a range of fine wines, organic pet foods, newspapers and magazines to the rest of the stock and they now also provide a very efficient Newspaper Delivery Service.



COOMBE STATIONERS & PRINTERS

352-354 Coombe Lane

West Wimbledon

London, SW20 0RJ

Tel: 020 8947 8000

Fax: 020 8947 7684

Email: sales@cspltd.co.uk

www.cspltd.co.uk



Coombe Stationers & Printers Ltd is an established family run business situated in the heart of the shopping parade for over 30 years.

We supply schools and businesses both locally and nationally and take pride in serving our local community, with high quality, reliable work which is a testament to the many loyal repeat customers.

Our staff are friendly, efficient and knowledgeable and work to a very high standard providing excellent service within the stationery, copying, digital and offset printing environment.

With our state-of-the-art equipment we can offer a very high turn around allowing us to keep up with demand for same day service on certain products.

We have grown over the years to provide a varied selection of stationery products, arts & crafts and greetings cards.

We look forward to welcoming you in our shop.



HARIA PHARMACY

West Wimbledon, London

SW20 0RJ

Tel: 020 8946 4331

Fax: 020 8879 6909

Email: hariapharmacy@gmail.com



Haria Pharmacy is a long established, local business. It is a family-run independent pharmacy on Coombe Lane.

For over four decades, our goal has always been clear and simple: to offer high quality service, comprehensive support and the best value to our customers. Our team members are friendly, helpful and well trained in providing our customers with accurate and detailed information in various areas of healthcare. For the past five years our "Community Pharmacy Patient Questionnaire" has shown 100% customer service satisfaction.

At Haria Pharmacy we offer a wide range of health services like travel clinic, medicine use review, blood pressure testing, glucose and cholesterol screening. We have an in-house cosmetic consultant who can help customers choose the right beauty products for their age, skin type and lifestyle. The photography lab offers services such as canvas & poster printing.

Amongst our numerous accomplishments, we have won the prestigious Wimbledon Retailer Excellence Award Trophy.



ROBERT HOLMES AND COMPANY

Coombe Office

360 Coombe Lane

London

SW20 0RJ

020 8947 1100

07949 027 079

www.robertholmes.co.uk



Since 1987 Robert Holmes & Company have been successfully marketing some of the finest residential property in South West London and Surrey to buyers and tenants from home and abroad. As an independent Estate Agent, we cover Wimbledon, Coombe, Kingston Hill, Mayfair, New Malden and Ham Common. Robert Holmes & Company have a broad range of buyers from the both the UK and International buyers.

We are known as one of South West London's leading independent firms of Surveyors, Valuers and Estate Agents. Local knowledge is key to the success of our business, and the whole team at Robert Holmes make it their business to be experts on the areas in which we specialise. We understand that it is not just "the property" that is the factor when moving to a particular location; the schools, leisure facilities and transport networks are also key factors influencing the buying or renting decision.



USEFUL NUMBERS

Below is a list of telephone numbers for Council services. If a service is not listed here which you would like information on, please call the main reception number on 020 8274 4901 and staff will be happy to help.

Abandoned vehicles - 020 8274 4902
Adult & community education - 020 8543 9292
Allotments - 020 8545 3665
Area Forums (RP&WB) - 020 8545 4400
chrislarkman@gmail.com
Benefits service - 020 8545 4179
Blue badges - 020 8545 4661
Building control services - 020 8545 3145
Bulky household waste collection service - 020 8274 4902
Cemeteries - 020 8545 3666
Citizens advice bureau - 0844 243 8430
Consultation and Community Engagement Team - 0208 545 3896
www.merton.gov.uk/community.living/communityforums.htm

Family Information Advice and Guidance Team - 020 8274 5830
Council tax and finance - 020 8274 4904
Council tax benefit - 020 8274 4903
Education welfare service - 020 8545 4021
Fly posting/Fly tipping - 020 8274 4902
Footpaths - 020 8545 3700
Freedom passes - 020 8545 4901
Garden waste - 020 8274 4902
Housing benefit - 020 8274 4903
Local Police Stations - 101
 (for Non-emergency matters in all Metropolitan Districts)
Merton Adult Access Team - 020 8545 4430
Noise - 020 8545 3025
Pest Control Advice - 020 8545 3022
Road cleaning - 020 8274 4902
Road safety - 020 8545 3205
Road safety - 020 8545 3205
Rubbish & recycling - 020 8274 4902
School admissions - 020 8274 4906
Stray animals - 020 8274 4902
 evenings - 08444 996063
Street lighting - 020 8545 3220
Tree preservation - 020 8545 3815

Merton College's TASTE RESTAURANT

is open for lunch
on three days a week, including
Fridays, in term time
at a cost of
£13.50 for a three-courses. Or
book a
Gourmet Dinner
on a Tuesday Night for just
£22.00

Telephone 0208 408 6560
or e-mail:

TasteReservation@south-thames.ac.uk

SMALL ADS EXTRA

ANDY'S PLUMBING & HEATING SERVICES. Includes: kitchen & bathroom installation, central heating systems, plumbing & tiling. Ring 07973 733649, 020 8393 0180. Email: andyreeve.plumber@virginmedia.com, www.andyreeve.webs.com.

HOLISTIC & SPORT INJURY MASSAGE THERAPIST (ITEC Qualified 10+years) offering ½ hour or 1 hour treatments for general well-being, stress or more specific problems and injuries. Mrs Suki Burne, Parkway, 020 8540 4422.

LOCAL ELECTRICIANS. AS Electrical SW20 / SM4 based. Stroma certified & Part P registered. All domestic/commercial work considered. All work undertaken to a high standard. Punctual and polite, competitive prices. 07955 134030 / 07915 071747 / infoASLondon@gmail.com.

AJM FENCING. Fencing - new and repairs. Garden maintenance/landscaping. All work undertaken. Call for free estimate. No job too small. 020 8715 8326 Mob: 07794 265533. ajmfencing@outlook.com.

SMALL ADS

£1.00 per line or part line. Minimum charge £6.00. Send money with your ad to Dick Coleman, Advertising Manager, 308 West Barnes Lane, New Malden KT3 6NB (cheques payable to RP&WBRA). Or for further details, contact Dick Coleman on 020 8949 7593, advertising@rpwbresidents.org.uk or www.rpwbresidents.org.uk/advertising

CURTAINS, SOFT FURNISHINGS, TRACKS & POLES MADE TO MEASURE BY ELEGANT CURTAINS, made from your own fabric or from our large selection of fabric. All types of tracks & poles supplied and fitted. For a free estimate call Linda Jordan on 020 8337 7145 or 07957 177164 or email: elegant_98@hotmail.com.

HELLINGS BROS. ROOFING SPECIALISTS Friendly family established locally since 1961. No job too small. Special rates for OAPs. Free quotations. All new work guaranteed. FREEPHONE 0800 047 6634; mob: 07803 143145. Email hellingsbrothers@gmail.com

COOMBE DECORATING AND MAINTENANCE SERVICE. For all external and internal property repairs, renovations, decorations etc. All minor building work and odd jobs welcomed. Over 30 years EXPERIENCE, EXCELLENT RATES! Free quotes Tel: 020 8946 5616 Mob: 07941 289 861.

FAULTY GUTTERS AND LEAKING DOWNPIPES REMOVED. Renewed in modern black UPVC materials by experts. All new works are fully guaranteed for 1 year. Please call 07900 977613.

CARPENTRY, PAINTING & DECORATING. For all your interior requirements call Martin Black on 020 8946 8176 for a free estimate.

WIMBLEDON PLUMBING & MAINTENANCE. Toilets Basins, Baths and Showers. Faulty Radiators removed, new ones installed. CH System maintenance. Experienced Qualified Plumbers. Call Mark 07900 977613. Email: mboardman2000@hotmail.com

PROFESSIONAL SOFT LANDSCAPER, AND HORTICULTURAL GARDENER. All aspects of soft landscaping undertaken. From designing and creating beautiful flower beds. New lawns, or rejuvenating existing ones. Ornamental walls, raised beds, and fencing. My aim is to provide a high standard of finish. Fully insured. Please contact Edward on 020 8543 9893 / 07752 309125. Email: edreilly0000@gmail.com

GRAHAM JEWSON LANDSCAPE DESIGN & GARDEN MAINTENANCE Regular garden maintenance, one off clearance and tidy ups, planting, pruning and new lawns laid. Full landscape design and build service. For further information please contact Graham 07870 125 416, email jewsongardens@gmail.com

PAINTING & DECORATING 30 years experience, quality work, fully insured, CRB Police checked. References available. Old fashioned courtesy. Free estimates. M. Fry 020 8337 9921. Mob: 07843 625870.

MOTSPUR PARK GARDEN SERVICES. The Guide's first ever garden service is back! Established 1988. Lawn & Hedge cutting, Fencing, Decking, Driveways, Jetwashing. 020 8224 1119 or 07890 582 460. Any Enquiries Welcome.

ELECTRICIAN: SW20 BASED DOMESTIC ELECTRICAL SERVICES. Fault finding, repairs. Fuse board upgrades, full/partial rewire, extra sockets/lights. Free estimates. References avail. NICEIC/Part P registered. All work guaranteed. Darren 07710 763841 contact@flying-spark.com

MOTSPUR PARK PROPERTY SERVICES. City & Guilds Plastering. Painting & Decorating, Guttering, Roofing, Window Cleaning. Rubbish clearance service – fully licensed. Contact 020 8224 1119 or 07890 582 460. Any enquiry welcome.

**BORED MONDAY
TO FRIDAY 9-5?**

Accredited SW London Careers Coach
Tailored 1-1 support
Free 1st consultation

Call Anna on 07817 022 734
naturallyexcelcoaching.co.uk

Any advertising that may appear in The Guide does not imply in any way an endorsement of the advertiser's products or services by the Residents' Association.

THE COMMITTEE

Chairman: John Elvidge, 72 Parkway (8542 2975)

Secretary & Editor: Jill Truman, 32 Beverley Ave SW20 ORL (8879 3525, jilltruman2@gmail.com)

Treasurer: John Townsend, 128 Grand Drive (07714705976(m) townsendj@blueyonder.co.uk)

Advertising Manager: Dick Coleman (8949 7593), dickcoleman@btinternet.com

Distribution Manager: Andrew Barwick, (8543 0978)

Webmaster: Charles Briscoe-Smith, charles@servology.co.uk

Minutes Secretary: Clare Townsend, (07910 044195, claretownsend@virginmedia.com)

Co-opted: Jerry Cuthbert (8540 4312), David Freeman, (8542 7955),
Michael Marks (8540 2860)

Residents Pavilion

Management Group: Chair: Jerry Cuthbert

Members: David Freeman, John Townsend, Linda Fitch, Moira Deveson,
Howard Phillips, Tina & Chris Lorimer.

AREA CO-ORDINATORS AND ROAD STEWARDS

Bushey Road Area

ANDREW BARWICK, 114 Grand Drive (8543 0978)

SUE BISHOP, 9 Linkway (8395 6095)

MALCOLM HUNT, 32 Grand Drive (8543 1043)

IRENE JACKSON, 17 Bradbury Court (8544 0503)

VAL LOWE, 52 Fairway (8542 8455)

CHRIS QUINBY, 39 Firstway (8542 5413)

ALAN THORNTON, 16a Blenheim Road (8540 3595)

Mrs. YVONNE SHARP, 88 Elm Walk (8395 6122)

GILL WOOD, 17 Oakway (8540 1399)

Heath Drive Area

ANNE-MARIE GERAGHTY, (07957 144071)

DAWN BORDBAR, 7 Berrylands, (07753 620714)

CATHERINE/GORDON CLIFTON, 58 Meadow Close (8540 1174)

JOHN ELVIDGE, 72 Parkway (8542 2975)

CAROL HICKS, 16 Heath Drive (07951 951452)

DONNA HILTON, 15 Cannon Close

Mrs. SHEILA MAY, 28 Parkway (8542 1451)

Cannon Hill Lane Area

JEAN TIPLER, 286 Cannon Hill Lane, (8544 1597)

Claremont Avenue Area

JOHN READ, 25 Rookwood Ave. (07909 754299)

Mrs. JAYNE BOULDEN, 90 Consfield Ave. (8949 1049)

Mr. MICHAEL BOWERS, 24a Claremont Ave. (8715 2487)

JOHN NICHOLSON, 18 Errol Gardens (8949 1970)

MARJORIE REYNOLDS, 105 Consfield Ave. (8942 6717)

Mrs. DOT RICHARDSON, 29 Stanley Ave. (8942 0834)

Mr. VIV ROWLANDS, 4 Blakes Terrace (8395 9106)

Seaforth Area

DICK COLEMAN, 308 West Barnes Lane (8949 7593)

BILL EUSTACE, 22 Adela Ave. (8949 4139)

DIANE JONES, 199 West Barnes Lane (8942 9681)

MICHAEL KNOWLES, 50 Phyllis Ave.

BRENDA PICKFORD, 107 Marina Avenue (8942 0762)

HILARY PEREIRA, 13 Seaforth Ave, (8942 1721)

FUMINO SHAILER, 84 Phyllis Ave. (8715 1761)

Coombe Lane Area

ADAM FIELDS, 69 Camberley Ave. (07794 780970)

Mrs. GHAZALA ANWAR, 3 Coombe Gardens (8944 7146)

NICKY BOSE, 178 Coombe Lane (8947 3649)

VIRGINIA FEATHERSTON, 85 Stanton Rd. (8946 3457)

MATT FLYNN, 19 Taunton Ave (07904 431472)

MOIRA GRANT, 48 Camberley Ave (07971 064862)

REBECCA GREGG, 3 Perth Close (8949 5901)

KRYSTYNA HOLLAND, 15 Westcoombe Ave (8946 7070)

DIANE SMITH, 2 Somerset Avenue (8946 4054)

West Barnes Estate Area

PETER STYLES, 6 Bodnant Gardens (8241 8552)

Westway Area

ANN BRISCOE-SMITH, 150 Westway (8542 0505)

HELEN EDWARDS, 157 Westway (8395 9512)

ARTHUR HOLDEN, 137 Westway (8540 7764)

Mrs. CHRIS HOLLINGSHEAD, 5 Westway Close

CAROLYN LONGBOTTOM, 163 Westway (8542 7498)

MICHAEL MARKS, 127 Westway (8540 2860)

Mrs. SUE PAINTER, 50 Westway (8540 3049)

JENNIFER PETTIFORD, 33 Westway (07912 313548)

CHRISTINE ROWE, 53 Greenway

Elm Walk Area

TOM DEVESON, 7 Parkway (7274 5599)

Mr. CLIFF BOTTOMLEY, 11 Woodlands (8542 4966)

TERRY COWARD, 46 Elm Walk (07488 278301)

ALISON EASTON, 6 Elm Close (8543 7372)

PETER HUDSON, 86 Elm Walk (8395 9638)

HOWARD PHILIPS, 145 Grand Drive (8542 5106)

RICHARD, VICKY ROBINSON, 54 Southway (8540 4678)

JOHN ROSE, 21 Elm Walk (07740 489224)

Guides by post service

GEORGE HOLDER, 131 Grand Drive SW20 9LY (8542 5716)

eGuides by email service

DICK COLEMAN, eguide@rpbwresidents.org.uk (8949 7593)

Hon. Legal Adviser: Hatice Mustafa, Pearson Hards, 2 Kingston Road, New Malden



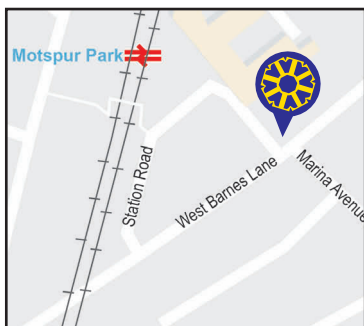
WA TRUELOVE & SON LTD

INDEPENDENT FAMILY FUNERAL DIRECTORS
& MONUMENTAL CRAFTSMEN SINCE 1885

**congratulate the Residents' Association
on their 90th Anniversary**

Serving the local community

- 24 hour call out service
- Home visits available
- Horse-drawn funerals
- Monumental masonry
- International repatriation



*For further details about Truelove
guaranteed pre-paid funeral plans*

**Call FREEPHONE
0800 074 3797**



MOTSPUR PARK

020 8949 6677

357 West Barnes Lane KT3 6JF

motspurpark@watltd.co.uk

Banstead • Caterham • Cheam • Coulsdon • Dorking
Epsom • Fetcham • Leatherhead • Mitcham • Morden
Oxted • Reigate • Sutton • Wallington • Worcester Park
See our website www.watltd.co.uk or scan this QR code

